

Indiana Collegiate Action Network

Results of the
**Indiana College
Substance Use Survey**
2009



Results from the Indiana College Substance Use Survey 2009

by

Rosemary King, M.P.H.
Mi Kyung Jun, Ph.D.
Carla Janáe Brown, M.S.
Junghun Lee, M.S.

Indiana University

Indiana Prevention Resource Center
501 N. Morton St., Suite 110
Bloomington, IN 47404
www.drugs.indiana.edu

Funded by the Indiana Family and Social Services Administration,
Division of Mental Health and Addiction
through a contract with the Indiana Collegiate Action Network

TABLE OF CONTENTS

List of Tables and Figures.....	iii
Introduction.....	1
Methodology	2
Key Findings.....	4
Annual Prevalence	6
Monthly Prevalence.....	7
Binge Drinking.....	8
Consequences.....	9
Risk Factors.....	11
Age of First Time Use.....	13
Alcohol Selection and Availability.....	14
Perception of Peer Behaviors	16
Characteristics of Survey Participants	17
References.....	19
Frequency Tables.....	21

LIST OF TABLES AND FIGURES

Table 1. Response rate.....	3
Table 2. Number of usable surveys	3
Table 3. Percentage of students reporting use of select substances in past year.....	6
Table 4. Percentage of students reporting use of select substances in past month.....	7
Table 5. Percentage of students reporting binge drinking in the <i>past two weeks</i>	8
Table 6. Mean number of days of binge drinking reported by students <i>in the past month</i>	8
Figure 1. Number of times students reported binge drinking <i>in the past two weeks</i>	8
Table 7. Percentage of students reporting select consequences as a result of their drinking.....	9
Table 8. Percentage of students reporting select consequences as a result of their drug use.....	10
Table 9. Average age of first time use of select substances.....	13
Table 10. Three easiest ways of getting alcohol by underage students.....	14
Figure 2. Methods underage students use to purchase alcohol.....	14
Figure 3. Places where underage students purchase alcohol.....	15
Figure 4. Usual types of alcohol students drink.....	15
Table 11. Perception of mean number of drinks the typical student consumes.....	16
Table 12. Perception of other students approval/disapproval of select behaviors.....	16
Table 13. Demographic characteristics of survey participants.....	17

INTRODUCTION

Substance use by college students has long been recognized as a serious problem on our nation's campuses, with alcohol being the most widely used substance. Rates of alcohol and drug use have been relatively steady over the past decade, with over 80% of college students using alcohol in the past year and approximately one in three using illicit drugs (Johnston et al., 2008). In 1998, the National Institute on Alcohol Abuse and Alcoholism undertook a comprehensive assessment of the problem of drinking on college campuses, concluding that social and environmental influences present on most campuses have created a culture of drinking, where alcohol consumption has become a rite of passage. College student drinking to excess (binge drinking) is widespread among college students, with serious consequences (NIAAA, 2002).

In 2006, the Indiana Collegiate Action Network (ICAN) provided funding for the first uniform assessment of substance use across institutions of higher education in Indiana, utilizing the Core Alcohol and Drug Survey. Beginning in 2008, the Indiana Division of Mental Health and Addiction (DMHA) awarded funding to ICAN to continue the statewide collection and analysis of data on the prevalence of substance use by Indiana college students. ICAN, in conjunction with the Indiana Prevention Resource Center (IPRC) developed a new survey instrument in 2009, called the Indiana College Substance Use Survey, to collect information on items of interest to Indiana colleges.

This report summarizes the findings of the Indiana College Substance Use Survey conducted by the Indiana Prevention Resource Center in Spring, 2009. The survey was administered through a contract with ICAN, with funding by DMHA. Findings on the statewide prevalence of alcohol, tobacco and other drug use, consequences, availability, and student perceptions of peer behaviors are presented. Findings have been analyzed across gender and age variables, as well as between two- and four-year schools. National prevalence data from the Monitoring the Future Study has been included to facilitate comparison between Indiana college students and the national rates, where available. The Monitoring the Future data is the most recent national data (2008) available on college student prevalence rates of substance use.

METHODOLOGY

The Indiana College Substance Use Survey was developed by the Indiana Collegiate Action Network (ICAN) and the Indiana Prevention Resource Center (IPRC), with input from Indiana institutions of higher education and the Indiana State Epidemiology and Outcomes Workgroup. Survey items were adapted from several sources, including the Core Alcohol and Drug Survey (Core Institute, Southern Illinois University-Carbondale), the National College Health Assessment II (American College Health Association), and the Monitoring the Future Survey (Institute for Social Research, University of Michigan). The Indiana survey was developed to assess substance use and consequences, as well as variables identified in the research literature as associated with use (availability, peer attitudes and norms, and age of first use). The survey is intended to provide meaningful data at both the campus and state levels, to understand substance use problems and develop effective plans for reducing substance use by college students. Each participating school receives a report of their results. Data from each participating school is the property of that institution, and is not released without their permission. The survey instrument can be accessed at http://www.drugs.indiana.edu/collegesurvey/sample/intro_info.html.

All two- and four-year colleges in Indiana were invited to participate in the survey. Seven colleges participated, including five four-year colleges and two two-year colleges. Students were surveyed during a two-week period which ended either before spring break, or in the case of one school, one month after spring break. The period immediately following spring break was avoided because of the historically higher rates of use during that time. Participating schools chose either an online or paper format. Six schools used the online version and one used the paper format. Selection of students was determined by the participating school. All schools but one chose to survey an entire population of the student body; either all students, all undergraduate students, or all students residing in dormitories. One school chose a random sampling of undergraduate students. For the online surveys, students received an invitation via email, and a reminder email midway through the survey period. Participation in the survey was voluntary and anonymous. Incentives were offered by some schools to improve participation rates (e.g., cash, gift cards, etc.). The survey procedures were reviewed by the Indiana University-Bloomington Institutional Review Board to ensure protection of participants as required by federal Human Subjects regulations.

A total of 25,788 students were invited to participate in the 2009 Indiana College Substance Use Survey, including 25,440 using the online format and 348 using paper surveys. A total of 5,440 students responded to the survey, for a response rate of 21.1%.

Table 1. Response rate

Number of students invited to participate	Number of respondents	Response Rate
25,788	5,440	21.1%

Three criteria were used to clean the data. Surveys were discarded if any of the following conditions were met:

- gender information missing,
- age information missing (paper version only),
- inconsistent responses on substance use across time measures (monthly vs. annually) for more than one-third of the substances queried,

A total of 555 surveys were rejected due to meeting at least one of the criteria, leaving 4,885 usable surveys (89.8%).

Table 2. Number of usable surveys

	Frequency	Percent
No gender reported	424	7.8
Uncertain age information due to missing data (paper version only)	46	0.8
Surveys rejected due to error check	85	1.6
Total number of usable surveys	4,885	89.8
Total	5,440	100.0

KEY FINDINGS

Eight in ten Indiana college students reported drinking alcohol in the past year, including three-fourths of the students under 21 years of age. Almost three in ten reported using cigarettes (28.9%), and approximately one-fourth used marijuana (24.9%). Annual prevalence rates for all substances queried are provided in Table 3. Male students used tobacco, marijuana, hallucinogens and misused prescription drugs during the past year at rates significantly higher than females. Annual prevalence rates of cigarette and alcohol use were significantly higher for students 21 or older, while use of opiates and over-the-counter medications to get high were significantly higher for students under 21. Students attending two-year schools reported significantly higher rates of cigarette use, prescription drug misuse, and methamphetamine use, while students attending four-year schools were more likely to use alcohol and smoke tobacco with a water pipe.

Three-fourths (74.6%) of the Indiana students reported using alcohol in the past month, compared to 69% nationally (Johnston et al., 2009). One in five of the students used cigarettes in the past month, and 14.9% reported marijuana use over the same period (Table 4). Monthly prevalence rates for male college students in Indiana were statistically higher than females for all substances queried, except alcohol and over-the-counter medications. Students at two-year colleges reported statistically higher monthly use of cigarettes, chewing tobacco, and prescription medication misuse than students at four-year colleges. They also reported statistically lower rates of monthly use of alcohol, cocaine, and tobacco use via water pipe/hookah. Students 21 or older reported significantly higher rates of cigarette and alcohol use in the past 30 days, but lower rates of smoking cigars and misuse of over-the-counter medications than students under 21.

Binge drinking was defined in the Indiana College Substance Use Survey as four or more drinks in one sitting for females and five or more drinks in one sitting for males. This gender-specific standard follows the definition established by the National Institute on Alcohol Abuse and Alcoholism (NIAAA, 2004). As a group, college students are significantly and substantially more likely to binge drink than non-college peers (Johnston et al., 2008). Students who binge drink experience significantly more adverse consequences than those who do not. One study found that college students who binge drank occasionally were five times more likely to experience five or more alcohol-related problems compared to students who did not binge drink. Students who were frequent binge drinkers (binge drinking three or more times in the past two weeks) were 4 to 15 times more likely to experience a particular problem than non-binge drinkers (Wechsler et al., 2000b).

In Indiana, almost half of the students surveyed reported binge drinking in the past two weeks, with male students reporting statistically higher rates than female students. Students over 21

and students attending four-year schools also reported statistically higher rates than their counterparts (Table 5). Students who reported binge drinking in the past month did so on an average of five days. Male students who binge drank in the past month reported an average of 5.9 days in the past month, while female students reported an average of 4.4 days of binge drinking over the same period (Table 6).

Consequences resulting from underage alcohol use include violence, unintentional injuries, risky sexual behavior, diminished academic performance and use of other drugs, affecting not only the individuals consuming alcohol, but those around them as well (NIAAA, 2004/2005; Wechsler & Nelson, 2008). Researchers estimated that alcohol-related problems experienced by 18-24 year old U.S. college students in 2001 included 1,700 student deaths from alcohol-related injuries, approximately 599,000 unintentional injuries while under the influence of alcohol, and approximately 696,000 students assaulted by other students who had been drinking, including 97,000 sexual assaults (Hingson et al., 2005). The Indiana College Substance Use Survey asked students to indicate the number of times they experienced select consequences due to their drinking or drug use. The most commonly experienced consequences of alcohol use included feeling bad about their drinking (30.4%), missing a class or assignment (19.5%), and driving while under the influence of alcohol (17.3%). Consequences of drug use included feeling bad about their drug use (11.1%), using more than one drug at a time (10.9%), and driving while under the influence of drugs (9.0%).

ANNUAL PREVALENCE

Table 3. Percentage of students reporting use of select substances in past year.

Substance	All Students		By Gender		By Age		By School Type	
	Indiana	U.S. ¹	Males	Females	Under 21	21 or Over	2-Year Schools	4-Year Schools
Cigarettes	28.9	30.0	31.7	26.7 ***	27.2	30.8 **	40.7	27.4 ***
Cigars	26.1		43.7	12.9 ***	27.1	25.0	20.0	26.9 **
Chewing/smokeless tobacco	9.3		18.0	2.7 ***	9.9	8.6	14.8	8.6 ***
Smoking tobacco with hooka/water pipe	26.2		30.5	22.9 ***	27.1	25.1	15.0	27.6 ***
Alcohol	80.2	82.1	80.9	79.6	74.6	86.5 ***	69.1	81.5 ***
Marijuana	24.9	32.3	29.2	21.6 ***	25.8	23.8	22.9	25.1
Cocaine	3.6	4.4	4.1	3.2	3.3	4.0	3.1	3.7
Hallucinogens	4.0	5.1	4.8	3.3 *	4.3	3.6	3.9	4.0
Opiates	2.4		2.9	2.1	2.8	1.9 *	3.0	2.3
Designer drugs	2.9		3.0	2.8	3.3	2.4	2.8	2.9
Inhalants	2.0	1.1	2.3	1.8	2.3	1.8	2.6	2.0
Steroids	1.7		1.4	1.8	1.9	1.4	2.2	1.6
Other illegal drugs	3.3		3.3	3.3	3.8	2.9	4.1	3.2
Prescription pills not prescribed to student	11.5		12.7	10.7 *	10.9	12.3	17.0	10.9 ***
Prescription medicines to get high	6.1		7.6	4.9 ***	6.3	5.8	9.4	5.6 ***
Over-the-counter medications to get high	2.9		2.8	3.0	3.6	2.2 **	3.1	2.9
Methamphetamine	1.6	0.5	1.3	1.8	1.8	1.3	2.8	1.5 *

Note: Statistically significant difference between genders, ages, or school types at: * p < .05, **p < .01, ***p < .001
¹National data is from the 2008 Monitoring the Future survey, Johnston et al., 2009.

MONTHLY PREVALENCE

Table 4. Percentage of students reporting use of select substances in past month.

Substance	All Students		By Gender		By Age		By School Type	
	Indiana	U.S. ¹	Males	Females	Under 21	21 or Over	2-Year Schools	4-Year Schools
Cigarettes	19.3	17.9	22.0	17.3	17.4	21.5	34.8	17.4
Cigars	12.7		22.4	5.4	13.6	11.6	11.8	12.8
Chewing/smokeless tobacco	5.9		13.0	0.6	5.8	6.0	11.1	5.3
Smoking tobacco with hooka/water pipe	11.4		13.8	9.5	11.7	11.0	7.2	11.9
Alcohol	74.6	69.0	75.8	73.7	67.6	82.6	60.8	76.3
Marijuana	14.9	17.0	18.4	12.3	15.3	14.4	16.1	14.8
Cocaine	1.4	1.2	1.8	1.0	1.2	1.5	0.4	1.5
Hallucinogens	1.0	1.7	1.7	0.6	1.3	0.8	0.6	1.1
Opiates	0.8		1.2	0.4	0.9	0.6	0.7	0.8
Designer drugs	0.9		1.3	0.6	1.0	0.9	0.9	0.9
Inhalants	0.5	0.4	1.0	0.1	0.6	0.4	0.0	0.6
Steroids	0.4		0.6	0.3	0.3	0.5	0.6	0.4
Other illegal drugs	1.1		1.6	0.8	1.4	0.8	1.5	1.1
Prescription pills not prescribed to student	6.3		7.7	5.3	6.1	6.6	10.4	5.8
Prescription medicines to get high	3.1		4.2	2.3	3.2	3.0	4.8	2.9
Over-the-counter medications to get high	1.2		1.4	1.1	1.5	0.9	1.5	1.2
Methamphetamine	0.3	0.0	0.6	0.1	0.4	0.3	0.6	0.3

Note: Statistically significant difference between genders, ages, or school types at: * p < .05, ** p < .01, *** p < .001
¹National data is from the 2008 Monitoring the Future survey, Johnston et al., 2009.

BINGE DRINKING

Table 5. Percentage of students reporting binge drinking in the past two weeks.

Substance	All Students		By Gender		By Age		By School Type	
	Indiana	U.S. ¹	Males	Females	Under 21	21 or Over	2-Year Schools	4-Year Schools
Binge Drinking	48.0	40.0	55.8	42.1	46.2	50.0	31.4	50.0

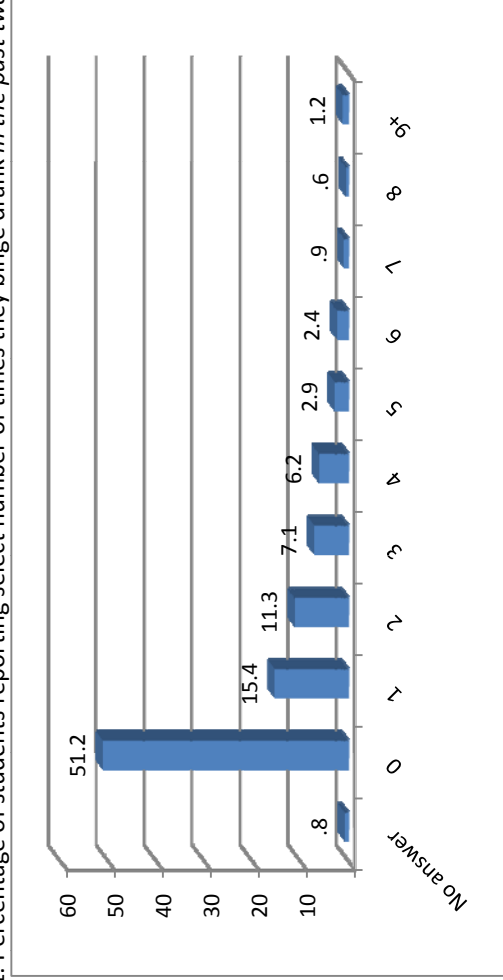
Note: Statistically significant difference between genders, ages, or school types at: **p < .01, ***p < .001
¹National data is from the 2008 Monitoring the Future survey, Johnston et al., 2009.

Table 6. Mean number of days of binge drinking reported by students in the past month (range = 1 – 30; n = 2,655).

Substance	All Students		By Gender		By Age		By School Type	
	Indiana	U.S. ¹	Males	Females	Under 21	21 or Over	2-Year Schools	4-Year Schools
Mean	5.1	4.6	5.9	4.4	4.9	5.4	4.5	5.2
Standard Deviation	4.6	4.9	4.9	4.1	4.4	4.7	4.5	4.6

Note: Statistically significant difference between genders, or ages: *p < .05 ; ***p < .001

Figure 1. Percentage of students reporting select number of times they binge drank in the past two weeks.



CONSEQUENCES

Table 7. Percentage of students who reported select consequences as a result of drinking.

Consequence	%
Spouse/partner or parents worried or complained about your drinking	13.8
Felt bad about your drinking	30.4
Been unable to stop drinking when you wanted to	9.0
Attended Alcoholics Anonymous	1.5
Created problems between you and your spouse/partner	11.2
Gotten into trouble at work or school because of drinking	6.6
Neglected your obligations, your family, or your work for 2 or more days in a row because you were drinking	5.7
Gone to anyone for help to reduce your drinking or your potential problems due to drinking	2.4
Been in the hospital because of drinking	1.1
Been arrested even for a few hours because of drinking	2.0
Been arrested for drunk driving or driving after drinking	0.8
Driven a car while under the influence	17.3
Gotten into physical fights when drinking	6.4
Experienced unwanted sexual attention such as being touched when you don't want to be, forced kissing, etc.	11.0
Engaged in risky sexual behavior such as having unprotected sex or sex with someone you just met because you were drinking	11.9
Missed class or assignments	19.5

Table 8. Percentage of students who reported select consequences as a result of drug use.

Consequence	%
Abused more than one drug at a time	10.9
Been unable to stop using drugs when you wanted to	3.4
Ever had blackouts or flashbacks as a result of drug use	6.2
Ever felt bad or guilty about your drug use	11.1
Had your spouse/partner complain about your involvement with drugs	4.0
Neglected your family because of your use of drugs	2.4
Engaged in illegal activities in order to obtain drugs	3.3
Gotten into physical fights because you were using drugs	1.2
Ever experienced withdrawal symptoms (felt sick) when you stopped taking drugs	2.9
Had medical problems as a result of your drug use (e.g. memory loss, infections, convulsions, bleeding)	2.2
Driven a car while under the influence of drugs	9.0
Gotten in trouble at work because of drug use	0.9
Been in very vulnerable situations, such as a situation in which you could have been hurt and/or date raped when using drugs	2.3
Engaged in risky sexual behavior such as having unprotected sex or sex with someone you just met because you were using drugs	3.4
Failed a class because of drug use	1.0
Missed class or assignments due to drug use	4.2

RISK FACTORS

Age of First Use: Early onset of substance use has been correlated with the development of a range of substance-related problems, including involvement in motor vehicle crashes, unintentional injuries, and alcohol and/or drug dependence. (Behrendt et al., 2009; Dawson et al, 2008; Grant & Dawson 1998; Hingson et al, 2006; Hingson & Wenxing, 2009; Warner & White, 2003) Individuals who begin drinking in their mid-teens are four times more likely to become alcohol dependent during their lifetime compared to those who do not drink before the age of 21 (Grant & Dawson 1998). The Indiana College Substance Use Survey asked students how old they were when they first used select substances. Responses consisted of two-year intervals for ages 10 through 17 (i.e., 10-11 years, 12-13 years, etc.), a three-year interval for students aged 18 through 20, a four-year interval for ages 21 through 25, and open-ended ranges for extreme responses (“under 10” or “26+”). The mean age of first use was calculated using the midpoints of the intervals and the upper and lower endpoints for the extreme responses.

The mean age of first time use of inhalants was the lowest of all substances queried, at 15.2 years. The average age of first time use of cigarettes was 16.5 years, followed closely by alcohol (16.8 years). Over-the-counter medication misuse (16.3 years), steroids (16.6 years), and “other” drugs (16.5 years) had earlier mean ages of first use than alcohol (Table 9). Indiana college students attending two-year institutions were significantly younger than those attending four-year schools when they first used cigarettes, alcohol, marijuana, or prescription pills not prescribed to them. Male students were significantly younger than females when they first used cigars, smokeless tobacco, steroids or “other illegal drugs”.

Availability: College students’ access to alcohol is strongly correlated with increased levels of drinking (Wechsler et al., 2000a). Students under 21 routinely report that alcohol is easy to obtain from a variety of sources (Brown et al., 2009; Fabian et al., 2008; Wechsler et al., 2002). The Indiana survey asked underage students to identify the three easiest ways they obtain alcohol. Older friends was the most often cited response for the easiest way to get alcohol. The most common response for the second easiest method was off-campus parties, followed closely by on-campus parties (Table 10). Six percent of underage students reported buying alcohol without an ID, while 5% reported using a fake ID and 3% used someone else’s ID (Figure 2). Figure 3 illustrates the locations where underage students reported purchasing alcohol, with liquor stores, bars, and grocery stores being the most common places. All students (regardless of age) were asked what type of alcohol they usually drink. Beer was the most common alcoholic beverage consumed by students (35.8%), followed by liquor (28.2%) and wine (8.3%) (Figure 4).

Peer Perceptions: Many college students overestimate both the amount of drinking and drug use, and the approval of use by their peers (Borsari & Carey, 2003; Martens et al., 2006). These misperceptions have been shown to be positively correlated with the student's own drinking and drug use levels. Students who believe their peers drink or use drugs are more likely to drink or use drugs themselves (Kilmer et al., 2006; Neighbors et al 2007; Perkins et al., 2005). The Indiana College Substance Use Survey asked students how many alcoholic drinks they thought the typical student at their school had the last time he or she partied/socialized. Students could provide any figure between 0 – 99. The average of the responses was 6.8 drinks, with males estimating an average of 7.0 drinks and females estimating 6.6 drinks. Responses did not differ significantly between students by age categories (under 21 vs. 21+). However, responses by students at two-year schools were dramatically higher than those at four-year schools, with students at two-year schools believing the typical student consumed 9.2 drinks the last time he or she partied, while the average response for students at four-year schools was 6.5 drinks (Table 11).

The survey also asked participants how they thought other students on their campus felt about using certain substances. Only one in three (33.4%) thought their peers would disapprove of having five or more drinks in one sitting, and only 31.7% thought their peers would disapprove of taking one or two drinks nearly every day. Less than one-fourth of the students (22.4%) thought their peers would disapprove of trying marijuana once or twice, while two-fifths (39.9%) felt their peers would disapprove of smoking it occasionally. Two-thirds of the respondents (66.4%) thought regular use of marijuana would be disapproved of by other students. Eight in ten students thought their peers would disapprove of trying cocaine (79.9%), LSD (79.4%), or amphetamines (79.3%) once or twice, with slightly higher percentages of students believing their peers would disapprove of regular use of those substances (cocaine - 89.1%, LSD - 88.8%, amphetamines - 86.1%) (Table 12).

AGE OF FIRST TIME USE

Table 9. Average age of first time use of select substances¹.

Substance	All Students		By Gender		By Age		By School Type	
	Indiana		Males	Females	Under 21	21 or Over	2-Year Schools	4-Year Schools
Cigarettes	16.5		16.6	16.5	16.4	16.7	15.4	16.8 ***
Cigars	17.6		17.5	17.8 **	17.2	18.0 ***	17.1	17.6 **
Chewing/smokeless tobacco	17.2		17.0	17.8 **	16.8	17.5 **	16.0	17.4 ***
Smoking tobacco with hooka/water pipe	18.4		18.4	18.4	17.8	19.0 ***	18.2	18.4
Alcohol	16.8		16.8	16.9	16.4	17.2 ***	16.2	16.9 ***
Marijuana	17.1		17.1	17.1	16.8	17.4 ***	16.1	17.2 ***
Cocaine	18.2		18.0	18.5	16.8	19.0 ***	18.6	18.1
Hallucinogens	17.8		17.6	18.1	17.1	18.3 ***	17.4	17.9
Opiates	17.3		16.9	18.1	16.3	17.9 **	18.9	16.9 *
Designer drugs	18.2		17.8	18.6	16.9	19.1 ***	17.7	18.3
Inhalants	15.2		15.6	14.7	14.3	15.9 **	15.8	15.1
Steroids	16.6		14.8	19.9 **	13.7	19.1 **	18.0	16.2
Other illegal drugs	16.5		16.0	17.1 *	15.9	17.1 *	16.4	16.6
Prescription pills not prescribed to student	17.6		17.5	17.6	16.8	18.2 ***	16.9	17.7 **
Prescription medicines to get high	17.1		17.2	17.1	16.4	17.8 ***	16.8	17.2
Over-the-counter medications to get high	16.3		16.1	16.5	15.8	16.8 *	16.4	16.3
Methamphetamine	17.2		16.8	17.6	15.7	18.0 *	18.1	16.5

Note: Statistically significant difference between genders, ages, or school types at: * p < .05, ** p < .01, *** p < .001

¹ Average age was calculated using the mid-points of the age ranges that were provided as responses.

ALCOHOL SELECTION AND AVAILABILITY

Table 10. Three easiest ways of getting alcohol as reported by students who are under 21 and who used alcohol during the past year (n =2,014)¹.

	Most common response	2nd most common response	3rd most common response
First Easiest	Older friends (44.9%)	On-campus parties (15.8%)	Off-campus parties (10.8%)
Second Easiest	Off-campus parties (25.4%)	On-campus parties (20.3%)	Older friends (18.2%)
Third Easiest	Off-campus parties (22.2%)	Someone else on campus (15.9%)	On-campus parties (15.7%)

¹Students were asked to identify the first, second, and third easiest ways that they obtain alcohol. The top three responses in each category are reported in the table.

Figure 2. Percentage of students under 21 who reported purchasing alcohol by select methods (n=2,608).

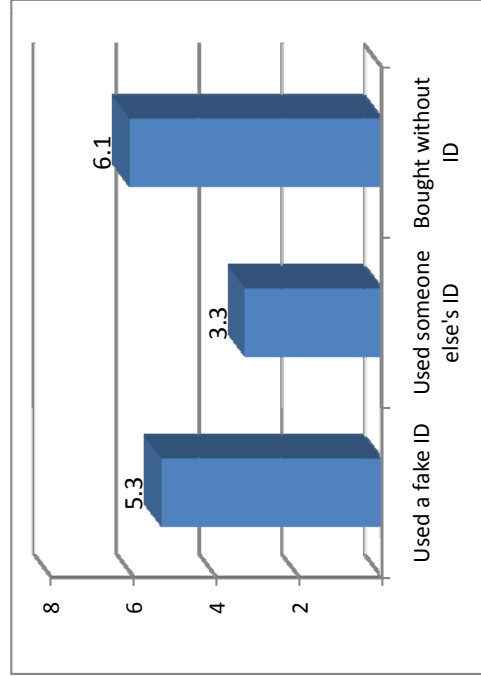


Figure 3. Percentage of students under 21 who reported select locations as the easiest place to purchase alcohol (n=2,608).

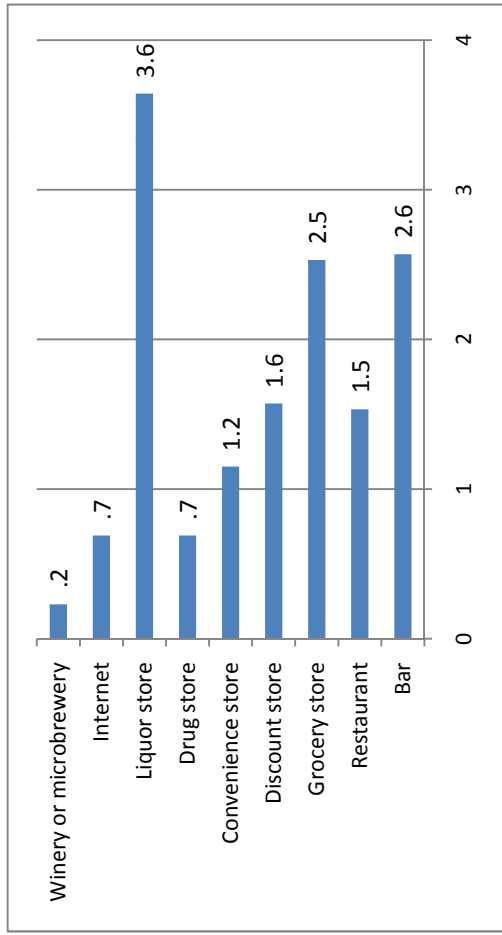
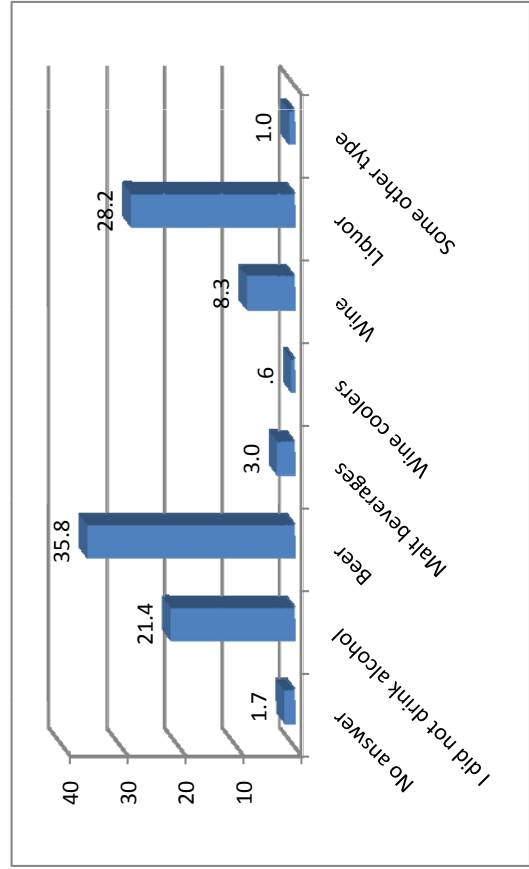


Figure 4. Percentage of students who reported select categories as the usual type of alcohol they drank in the past month.



PERCEPTION OF PEER BEHAVIORS

Table 11. Mean number of drinks respondents thought the typical student consumed the last time he/she “partied/socialized” (range = 0 – 99).

	All Students		By Gender		By Age			By School Type	
	Indiana	Mean	Males	Females	Under 21	21 or Over	2-Year Schools	4-Year Schools	Mean
Mean	6.8	7.0	7.0	6.6	6.9	6.7	9.2	6.5	6.5
Standard Deviation	7.5	7.6	7.6	7.4	7.8	7.2	11.1	6.9	6.9

Note: Statistically significant difference between genders, or school types at: *p < .05; ***p < .001

Table 12. Percentage of students who thought other students on campus would approve/disapprove of select behaviors.

	Strongly approve	Somewhat approve	Neither approve or disapprove	Somewhat disapprove	Strongly disapprove	No answer
Trying marijuana once or twice	11.8	32.9	31.6	15.0	7.4	1.2
Smoking marijuana occasionally	5.6	23.5	29.7	27.0	12.9	1.3
Smoking marijuana regularly	2.8	9.3	20.1	32.4	34.0	1.4
Trying cocaine once or twice	1.4	4.9	12.5	30.4	49.5	1.4
Taking cocaine regularly	1.1	1.4	7.0	11.9	77.2	1.4
Trying LSD once or twice	1.4	4.5	13.3	26.1	53.3	1.5
Taking LSD regularly	1.1	1.4	7.3	12.6	76.2	1.5
Trying amphetamine once or twice	1.3	4.4	13.3	24.3	55.0	1.6
Taking amphetamine regularly	1.2	1.9	8.6	12.3	73.8	2.2
Taking one or two drinks of an alcoholic beverage nearly every day	11.9	23.6	31.6	22.2	9.5	1.3
Taking three or four drinks nearly every day	5.1	12.3	21.6	29.5	30.2	1.3
Having five or more drinks in one sitting	13.2	24.1	27.6	16.2	17.2	1.8
Taking steroids for body building or improved athletic performance	1.7	5.8	19.9	29.6	41.6	1.5

CHARACTERISTICS OF SURVEY PARTICIPANTS

A majority of the survey respondents were female (57.1%) and under 21 years of age (53.4%). Most respondents were White (86.9%) and non-Hispanic (93.9%) This compares to the total enrollment of all Indiana institutions of higher education, which is comprised of 55% female, 78% White and 97% non-Hispanic (National Center for Education Statistics, n.d.). Almost all of the survey respondents (95.6%) were full-time, and 91% estimated their Grade Point Average (GPA) at an A or B level. Three-fifths of the students lived on-campus, with over half living in a residence hall.

Table 13. Demographic characteristics of survey participants.

	Frequency	%
Gender		
Male	2,098	42.9
Female	2,787	57.1
Age		
Under 21	2,608	53.4
21 or older	2,277	46.6
Race		
White	4,247	86.9
Black/African American	113	2.3
Asian	179	3.7
Native American/Alaskan Native	21	0.4
Hawaiian/Pacific Islander	22	0.5
More than one race	146	3.0
Other	123	2.5
No answer	34	0.7
Ethnicity		
Hispanic	270	5.5
Non-Hispanic	4,588	93.9
No answer	27	0.6
Classification		
Freshman	1,416	29.0
Sophomore	1,147	23.5
Junior	929	19.0
Senior	891	18.2
Grad/professional	450	9.2
Not seeking a degree	15	0.3
Other	25	0.5
No answer	12	0.2

Table 13 (continued). Demographic characteristics of survey participants.

	Frequency	%
School		
2-year	541	11.1
4-year	4,344	88.9
Student status		
Full-time	4,668	95.6
Part-time	189	3.9
No answer	28	0.6
Approximate GPA		
A	2,254	46.1
B	2,192	44.9
C	396	8.1
D	27	0.6
F	4	0.1
No answer	12	0.2
Location of residence		
On-campus	3,025	61.9
Off-campus	1,830	37.5
No answer	30	0.6
Type of residence		
House/apartment/etc.	1,945	39.8
Residence hall	2,551	52.2
Fraternity/Sorority	201	4.1
Other campus housing	99	2.0
Other	74	1.5
No answer	15	0.3

REFERENCES

- Behrendt, S., Wittchen, H. U., Höfler, M., Lieb, R., & Beesdo, K. (2009). Transitions from first substance use to substance use disorders in adolescence: Is early onset associated with a rapid escalation? *Drug and Alcohol Dependence*, *99*(1-3), 68-78.
- Borsari, B., & Carey, K. B. (2003). Descriptive and Injunctive Norms in College Drinking: A Meta-Analytic Integration. *Journal of Studies on Alcohol*, *64*(3), 331.
- Brown, R. L., Matousek, T. A., & Radue, M. B. (2009). Legal-Age Students' Provision of Alcohol to Underage College Students: An Exploratory Study. *Journal of American College Health*, *57*(6), 611-618.
- Dawson, D. A., Goldstein, R. B., Chou, S. P., Ruan, W. J., & Grant, B. F. (2008). Age at first drink and the first incidence of adult-onset DSM-IV alcohol use disorders. *Alcoholism, Clinical And Experimental Research*, *32*(12), 2149-2160.
- Fabian, L. E. A., Toomey, T. L., Lenk, K. M., & Erickson, D. J. (2008). How Do Underage College Students Get Alcohol? *Journal of Drug Education*, *38*(1), 15-26.
- Grant, B. F., & Dawson, D. A. (1998). Age of onset of drug use and its association with DSM-IV drug abuse and dependence: results from the National Longitudinal Alcohol Epidemiologic Survey. *Journal Of Substance Abuse*, *10*(2), 163-173.
- Hingson, R.W., & Wenxing, Z. (2009). Age of Drinking Onset, Alcohol Use Disorders, Frequent Heavy Drinking, and Unintentionally Injuring Oneself and Others After Drinking. *Pediatrics*, *123*(6), 1477-1484.
- Hingson, R.W., Heeren, T., & Winter, M.R. (2006). Age at drinking onset and alcohol dependence: age at onset, duration, and severity. *Archives Of Pediatrics & Adolescent Medicine*, *160*(7), 739-746.
- Hingson, R.W., Heeren, T., Winter, M., & Wechsler, H. (2005). Magnitude of alcohol-related mortality and morbidity among U.S. college students age 18-24: Changes from 1998 to 2001. *Annual Review of Public Health*, *26*, 259-279.
- Johnston, L.D., O'Malley, P.M., Bachman, J.G., & Schulenberg, J.E. (2008). *Monitoring the Future, National Survey Results on Drug Use, 1975-2007. Volume II: College Students and Adults Ages 19-45*. NIH Pub. No. 08-6418B. Bethesda, MD: National Institute on Drug Abuse.
- Johnston, L.D., O'Malley, P.M., Bachman, J.G., & Schulenberg, J. E. (2009). *Monitoring the Future National Survey Results on Drug Use, 1975-2008. Volume I: Secondary school students*. NIH Publication No. 09-7402. Bethesda, MD: National Institute on Drug Abuse.
- Kilmer, J. R., Walker, D. D., Lee, C. M., Palmer, R. S., Mallett, K. A., Fabiano, P., et al. (2006). Misperceptions of College Student Marijuana Use: Implications for Prevention. *Journal of Studies on Alcohol*, *67*(2), 277-281.
- Martens, M. P., Page, J. C., Mowry, E. S., Damann, K. M., Taylor, K. K., & Cimini, M. D. (2006). Differences Between Actual and Perceived Student Norms: An Examination of Alcohol Use, Drug Use, and Sexual Behavior. *Journal of American College Health*, *54*(5), 295-300.
- National Center for Education Statistics, n.d. Accessed at: <http://nces.ed.gov/programs/stateprofiles>.

- National Institute of Alcohol Abuse and Alcoholism (NIAAA). (2004). NIAAA council approves definition of binge drinking. *NIAAA Newsletter* (3), 3. Accessed at: http://pubs.niaaa.nih.gov/publications/Newsletter/winter2004/Newsletter_Number3.pdf
- National Institute on Alcohol Abuse and Alcoholism (NIAAA) Interdisciplinary Team on Underage Drinking Research. (2004/2005). The Scope of the Problem. *Alcohol Research & Health*, 28(3), 111-120.
- National Institute on Alcohol Abuse and Alcoholism (NIAAA). (2002). A Call to Action: Changing the Culture of Drinking at U.S. Colleges. NIH Pub. No. 02-5010. Bethesda, MD: NIAAA.
- Neighbors, C., Lee, C. M., Lewis, M. A., Fossos, N., & Larimer, M. E. (2007). Are Social Norms the Best Predictor of Outcomes Among Heavy-Drinking College Students? *Journal of Studies on Alcohol & Drugs*, 68(4), 556-565.
- Perkins, H. W., Haines, M. P., & Rice, R. (2005). Misperceiving the College Drinking Norm and Related Problems: A Nationwide Study of Exposure to Prevention Information, Perceived Norms and Student Alcohol Misuse. *Journal of Studies on Alcohol*, 470-478.
- Warner, L. A., & White, H. R. (2003). Longitudinal Effects of Age at Onset and First Drinking Situations on Problem Drinking. *Substance Use & Misuse*, 38(14), 1983-2016.
- Wechsler, H., & Nelson, T. F. (2008). What We Have Learned From the Harvard School of Public Health College Alcohol Study: Focusing Attention on College Student Alcohol Consumption and the Environmental Conditions That Promote It. *Journal of Studies on Alcohol & Drugs*, 69(4), 481-490.
- Wechsler, H., Kuo, M., Lee, H., & Dowdall, G. W. (2000a). Environmental correlates of underage alcohol use and related problems of college students. *American Journal Of Preventive Medicine*, 19(1), 24-29.
- Wechsler, H., Lee, J. E., Kuo, M., & Lee, H. (2000b). College Binge Drinking in the 1990s: A Continuing Problem. *Journal of American College Health*, 48(5), 199.
- Wechsler, H., Lee, J. E., Nelson, T. F., & Kuo, M. (2002). Underage College Students' Drinking Behavior, Access to Alcohol, and the Influence of Deterrence Policies. *Journal of American College Health*, 50(5), 223.

FREQUENCY TABLES

Substance use during the last 12 months: Cigarettes

		Frequency	Percent	Valid Percent	Cumulative Percent
Valid	No answer	2	.0	.0	.0
	No	3472	71.1	71.1	71.1
	Yes	1411	28.9	28.9	100.0
	Total	4885	100.0	100.0	

Substance use during the last 12 months: Cigars

		Frequency	Percent	Valid Percent	Cumulative Percent
Valid	No answer	17	.3	.3	.3
	No	3593	73.6	73.6	73.9
	Yes	1275	26.1	26.1	100.0
	Total	4885	100.0	100.0	

Substance use during the last 12 months: Chewing or smokeless tobacco

		Frequency	Percent	Valid Percent	Cumulative Percent
Valid	No answer	35	.7	.7	.7
	No	4397	90.0	90.0	90.7
	Yes	453	9.3	9.3	100.0
	Total	4885	100.0	100.0	

Substance use during the last 12 months: Smoking tobacco with hooka or water pipe

		Frequency	Percent	Valid Percent	Cumulative Percent
Valid	No answer	20	.4	.4	.4
	No	3587	73.4	73.4	73.8
	Yes	1278	26.2	26.2	100.0
	Total	4885	100.0	100.0	

Substance use during the last 12 months: Alcohol

		Frequency	Percent	Valid Percent	Cumulative Percent
Valid	No answer	9	.2	.2	.2
	No	960	19.7	19.7	19.8
	Yes	3916	80.2	80.2	100.0
	Total	4885	100.0	100.0	

Substance use during the last 12 months: Marijuana

		Frequency	Percent	Valid Percent	Cumulative Percent
Valid	No answer	11	.2	.2	.2
	No	3658	74.9	74.9	75.1
	Yes	1216	24.9	24.9	100.0
	Total	4885	100.0	100.0	

Substance use during the last 12 months: Cocaine

		Frequency	Percent	Valid Percent	Cumulative Percent
Valid	No answer	35	.7	.7	.7
	No	4673	95.7	95.7	96.4
	Yes	177	3.6	3.6	100.0
	Total	4885	100.0	100.0	

Substance use during the last 12 months: Hallucinogens

		Frequency	Percent	Valid Percent	Cumulative Percent
Valid	No answer	32	.7	.7	.7
	No	4660	95.4	95.4	96.0
	Yes	193	4.0	4.0	100.0
	Total	4885	100.0	100.0	

Substance use during the last 12 months: Opiates

		Frequency	Percent	Valid Percent	Cumulative Percent
Valid	No answer	42	.9	.9	.9
	No	4725	96.7	96.7	97.6
	Yes	118	2.4	2.4	100.0
	Total	4885	100.0	100.0	

Substance use during the last 12 months: Designer drugs

		Frequency	Percent	Valid Percent	Cumulative Percent
Valid	No answer	44	.9	.9	.9
	No	4701	96.2	96.2	97.1
	Yes	140	2.9	2.9	100.0
	Total	4885	100.0	100.0	

Substance use during the last 12 months: Inhalants

		Frequency	Percent	Valid Percent	Cumulative Percent
Valid	No answer	39	.8	.8	.8
	No	4746	97.2	97.2	98.0
	Yes	100	2.0	2.0	100.0
	Total	4885	100.0	100.0	

Substance use during the last 12 months: Steroids

		Frequency	Percent	Valid Percent	Cumulative Percent
Valid	No answer	44	.9	.9	.9
	No	4760	97.4	97.4	98.3
	Yes	81	1.7	1.7	100.0
	Total	4885	100.0	100.0	

Substance use during the last 12 months: Other illegal drugs

		Frequency	Percent	Valid Percent	Cumulative Percent
Valid	No answer	41	.8	.8	.8
	No	4681	95.8	95.8	96.7
	Yes	163	3.3	3.3	100.0
	Total	4885	100.0	100.0	

Substance use during the last 12 months: Prescription pills that are not prescribed to you

		Frequency	Percent	Valid Percent	Cumulative Percent
Valid	No answer	19	.4	.4	.4
	No	4302	88.1	88.1	88.5
	Yes	564	11.5	11.5	100.0
	Total	4885	100.0	100.0	

Substance use during the last 12 months: Prescription medicines to get high

		Frequency	Percent	Valid Percent	Cumulative Percent
Valid	No answer	37	.8	.8	.8
	No	4552	93.2	93.2	93.9
	Yes	296	6.1	6.1	100.0
	Total	4885	100.0	100.0	

Substance use during the last 12 months: Over-the-counter medications to get high

		Frequency	Percent	Valid Percent	Cumulative Percent
Valid	No answer	49	1.0	1.0	1.0
	No	4694	96.1	96.1	97.1
	Yes	142	2.9	2.9	100.0
	Total	4885	100.0	100.0	

Substance use during the last 12 months: Methamphetamine

		Frequency	Percent	Valid Percent	Cumulative Percent
Valid	No answer	55	1.1	1.1	1.1
	No	4752	97.3	97.3	98.4
	Yes	78	1.6	1.6	100.0
	Total	4885	100.0	100.0	

Number of days in the past month substance was used: Cigarettes

		Frequency	Percent	Valid Percent	Cumulative Percent
Valid	No answer	1470	30.1	30.1	30.1
	0 day	2471	50.6	50.6	80.7
	1-2 days	359	7.3	7.3	88.0
	3-5 days	123	2.5	2.5	90.5
	6-9 days	76	1.6	1.6	92.1
	10-19 days	90	1.8	1.8	93.9
	20-29 days	68	1.4	1.4	95.3
	All 30 days	228	4.7	4.7	100.0
	Total	4885	100.0	100.0	

Number of days in the past month substance was used: Cigars

		Frequency	Percent	Valid Percent	Cumulative Percent
Valid	No answer	1458	29.8	29.8	29.8
	0 day	2807	57.5	57.5	87.3
	1-2 days	497	10.2	10.2	97.5
	3-5 days	71	1.5	1.5	98.9
	6-9 days	20	.4	.4	99.3
	10-19 days	17	.3	.3	99.7
	20-29 days	8	.2	.2	99.9
	All 30 days	7	.1	.1	100.0
	Total	4885	100.0	100.0	

**Number of days in the past month substance was used: Chewing or
smokeless tobacco**

		Frequency	Percent	Valid Percent	Cumulative Percent
Valid	No answer	1660	34.0	34.0	34.0
	0 day	2936	60.1	60.1	94.1
	1-2 days	118	2.4	2.4	96.5
	3-5 days	35	.7	.7	97.2
	6-9 days	27	.6	.6	97.8
	10-19 days	33	.7	.7	98.4
	20-29 days	29	.6	.6	99.0
	All 30 days	47	1.0	1.0	100.0
	Total	4885	100.0	100.0	

**Number of days in the past month substance was used: Smoking tobacco
with hooka or water pipe**

		Frequency	Percent	Valid Percent	Cumulative Percent
Valid	No answer	1524	31.2	31.2	31.2
	0 day	2806	57.4	57.4	88.6
	1-2 days	398	8.1	8.1	96.8
	3-5 days	88	1.8	1.8	98.6
	6-9 days	37	.8	.8	99.3
	10-19 days	19	.4	.4	99.7
	20-29 days	5	.1	.1	99.8
	All 30 days	8	.2	.2	100.0
	Total	4885	100.0	100.0	

Number of days in the past month substance was used: Alcohol

		Frequency	Percent	Valid Percent	Cumulative Percent
Valid	No answer	412	8.4	8.4	8.4
	0 day	829	17.0	17.0	25.4
	1-2 days	865	17.7	17.7	43.1
	3-5 days	919	18.8	18.8	61.9
	6-9 days	1024	21.0	21.0	82.9
	10-19 days	675	13.8	13.8	96.7
	20-29 days	139	2.8	2.8	99.5
	All 30 days	22	.5	.5	100.0
	Total	4885	100.0	100.0	

Number of days in the past month substance was used: Marijuana

		Frequency	Percent	Valid Percent	Cumulative Percent
Valid	No answer	1549	31.7	31.7	31.7
	0 day	2607	53.4	53.4	85.1
	1-2 days	336	6.9	6.9	92.0
	3-5 days	126	2.6	2.6	94.5
	6-9 days	64	1.3	1.3	95.8
	10-19 days	72	1.5	1.5	97.3
	20-29 days	68	1.4	1.4	98.7
	All 30 days	63	1.3	1.3	100.0
	Total	4885	100.0	100.0	

Number of days in the past month substance was used: Cocaine

		Frequency	Percent	Valid Percent	Cumulative Percent
Valid	No answer	1737	35.6	35.6	35.6
	0 day	3082	63.1	63.1	98.6
	1-2 days	37	.8	.8	99.4
	3-5 days	15	.3	.3	99.7
	6-9 days	6	.1	.1	99.8
	10-19 days	3	.1	.1	99.9
	20-29 days	2	.0	.0	99.9
	All 30 days	3	.1	.1	100.0
	Total	4885	100.0	100.0	

Number of days in the past month substance was used: Hallucinogens

		Frequency	Percent	Valid Percent	Cumulative Percent
Valid	No answer	1736	35.5	35.5	35.5
	0 day	3098	63.4	63.4	99.0
	1-2 days	41	.8	.8	99.8
	3-5 days	3	.1	.1	99.9
	6-9 days	4	.1	.1	99.9
	10-19 days	2	.0	.0	100.0
	All 30 days	1	.0	.0	100.0
	Total	4885	100.0	100.0	

Number of days in the past month substance was used: Opiates

		Frequency	Percent	Valid Percent	Cumulative Percent
Valid	No answer	1747	35.8	35.8	35.8
	0 day	3101	63.5	63.5	99.2
	1-2 days	19	.4	.4	99.6
	3-5 days	4	.1	.1	99.7
	6-9 days	7	.1	.1	99.9
	10-19 days	3	.1	.1	99.9
	20-29 days	1	.0	.0	99.9
	All 30 days	3	.1	.1	100.0
	Total	4885	100.0	100.0	

Number of days in the past month substance was used: Designer drugs

		Frequency	Percent	Valid Percent	Cumulative Percent
Valid	No answer	1746	35.7	35.7	35.7
	0 day	3093	63.3	63.3	99.1
	1-2 days	33	.7	.7	99.7
	3-5 days	5	.1	.1	99.8
	6-9 days	4	.1	.1	99.9
	10-19 days	1	.0	.0	99.9
	20-29 days	2	.0	.0	100.0
	All 30 days	1	.0	.0	100.0
	Total	4885	100.0	100.0	

Number of days in the past month substance was used: Inhalants

		Frequency	Percent	Valid Percent	Cumulative Percent
Valid	No answer	1750	35.8	35.8	35.8
	0 day	3111	63.7	63.7	99.5
	1-2 days	15	.3	.3	99.8
	3-5 days	2	.0	.0	99.9
	6-9 days	4	.1	.1	99.9
	10-19 days	1	.0	.0	100.0
	20-29 days	2	.0	.0	100.0
	Total	4885	100.0	100.0	

Number of days in the past month substance was used: Steroids

		Frequency	Percent	Valid Percent	Cumulative Percent
Valid	No answer	1747	35.8	35.8	35.8
	0 day	3118	63.8	63.8	99.6
	1-2 days	4	.1	.1	99.7
	3-5 days	5	.1	.1	99.8
	6-9 days	3	.1	.1	99.8
	10-19 days	2	.0	.0	99.9
	20-29 days	1	.0	.0	99.9
	All 30 days	5	.1	.1	100.0
	Total	4885	100.0	100.0	

Number of days in the past month substance was used: Other illegal drugs

		Frequency	Percent	Valid Percent	Cumulative Percent
Valid	No answer	1748	35.8	35.8	35.8
	0 day	3082	63.1	63.1	98.9
	1-2 days	29	.6	.6	99.5
	3-5 days	13	.3	.3	99.7
	6-9 days	6	.1	.1	99.9
	10-19 days	2	.0	.0	99.9
	20-29 days	1	.0	.0	99.9
	All 30 days	4	.1	.1	100.0
	Total	4885	100.0	100.0	

Number of days in the past month substance was used: Prescription pills that are not prescribed to you

		Frequency	Percent	Valid Percent	Cumulative Percent
Valid	No answer	1687	34.5	34.5	34.5
	0 day	2888	59.1	59.1	93.7
	1-2 days	181	3.7	3.7	97.4
	3-5 days	64	1.3	1.3	98.7
	6-9 days	40	.8	.8	99.5
	10-19 days	12	.2	.2	99.7
	20-29 days	7	.1	.1	99.9
	All 30 days	6	.1	.1	100.0
	Total	4885	100.0	100.0	

Number of days in the past month substance was used: Prescription medicines to get high

		Frequency	Percent	Valid Percent	Cumulative Percent
Valid	No answer	1721	35.2	35.2	35.2
	0 day	3012	61.7	61.7	96.9
	1-2 days	73	1.5	1.5	98.4
	3-5 days	32	.7	.7	99.0
	6-9 days	23	.5	.5	99.5
	10-19 days	11	.2	.2	99.7
	20-29 days	7	.1	.1	99.9
	All 30 days	6	.1	.1	100.0
	Total	4885	100.0	100.0	

Number of days in the past month substance was used: Over-the-counter medications to get high

		Frequency	Percent	Valid Percent	Cumulative Percent
Valid	No answer	1743	35.7	35.7	35.7
	0 day	3083	63.1	63.1	98.8
	1-2 days	32	.7	.7	99.4
	3-5 days	8	.2	.2	99.6
	6-9 days	13	.3	.3	99.9
	10-19 days	2	.0	.0	99.9
	20-29 days	3	.1	.1	100.0
	All 30 days	1	.0	.0	100.0
	Total	4885	100.0	100.0	

Number of days in the past month substance was used: Methamphetamine

		Frequency	Percent	Valid Percent	Cumulative Percent
Valid	No answer	1757	36.0	36.0	36.0
	0 day	3111	63.7	63.7	99.7
	1-2 days	5	.1	.1	99.8
	3-5 days	3	.1	.1	99.8
	6-9 days	2	.0	.0	99.9
	10-19 days	4	.1	.1	99.9
	All 30 days	3	.1	.1	100.0
	Total	4885	100.0	100.0	

Use of substance in the past year without a prescription: Adderall

		Frequency	Percent	Valid Percent	Cumulative Percent
Valid	No answer	53	1.1	1.1	1.1
	Did not use	4422	90.5	90.5	91.6
	Once per year	159	3.3	3.3	94.9
	6 times a year	138	2.8	2.8	97.7
	Once a month	59	1.2	1.2	98.9
	Once a week	33	.7	.7	99.6
	3 times a week	14	.3	.3	99.9
	5 times a week	3	.1	.1	99.9
	Every day	4	.1	.1	100.0
	Total	4885	100.0	100.0	

Use of substance in the past year without a prescription: Ritalin

		Frequency	Percent	Valid Percent	Cumulative Percent
Valid	No answer	72	1.5	1.5	1.5
	Did not use	4731	96.8	96.8	98.3
	Once per year	38	.8	.8	99.1
	6 times a year	21	.4	.4	99.5
	Once a month	11	.2	.2	99.8
	Once a week	5	.1	.1	99.9
	3 times a week	5	.1	.1	100.0
	5 times a week	2	.0	.0	100.0
	Total	4885	100.0	100.0	

Use of substance in the past year without a prescription: Xanax

		Frequency	Percent	Valid Percent	Cumulative Percent
Valid	No answer	71	1.5	1.5	1.5
	Did not use	4660	95.4	95.4	96.8
	Once per year	54	1.1	1.1	98.0
	6 times a year	52	1.1	1.1	99.0
	Once a month	23	.5	.5	99.5
	Once a week	15	.3	.3	99.8
	3 times a week	5	.1	.1	99.9
	5 times a week	4	.1	.1	100.0
	Every day	1	.0	.0	100.0
	Total	4885	100.0	100.0	

Use of substance in the past year without a prescription: Codeine

		Frequency	Percent	Valid Percent	Cumulative Percent
Valid	No answer	72	1.5	1.5	1.5
	Did not use	4659	95.4	95.4	96.8
	Once per year	69	1.4	1.4	98.3
	6 times a year	48	1.0	1.0	99.2
	Once a month	17	.3	.3	99.6
	Once a week	13	.3	.3	99.9
	3 times a week	1	.0	.0	99.9
	5 times a week	4	.1	.1	100.0
	Every day	2	.0	.0	100.0
	Total	4885	100.0	100.0	

Use of substance in the past year without a prescription: Hydrocodone

		Frequency	Percent	Valid Percent	Cumulative Percent
Valid	No answer	71	1.5	1.5	1.5
	Did not use	4552	93.2	93.2	94.6
	Once per year	84	1.7	1.7	96.4
	6 times a year	100	2.0	2.0	98.4
	Once a month	38	.8	.8	99.2
	Once a week	18	.4	.4	99.5
	3 times a week	12	.2	.2	99.8
	5 times a week	7	.1	.1	99.9
	Every day	3	.1	.1	100.0
	Total	4885	100.0	100.0	

Use of substance in the past year without a prescription: Percocet

		Frequency	Percent	Valid Percent	Cumulative Percent
Valid	No answer	78	1.6	1.6	1.6
	Did not use	4693	96.1	96.1	97.7
	Once per year	43	.9	.9	98.5
	6 times a year	39	.8	.8	99.3
	Once a month	16	.3	.3	99.7
	Once a week	8	.2	.2	99.8
	3 times a week	4	.1	.1	99.9
	5 times a week	4	.1	.1	100.0
	Total	4885	100.0	100.0	

Use of substance in the past year without a prescription: Oxycontin

		Frequency	Percent	Valid Percent	Cumulative Percent
Valid	No answer	75	1.5	1.5	1.5
	Did not use	4715	96.5	96.5	98.1
	Once per year	43	.9	.9	98.9
	6 times a year	21	.4	.4	99.4
	Once a month	14	.3	.3	99.7
	Once a week	9	.2	.2	99.8
	3 times a week	3	.1	.1	99.9
	5 times a week	4	.1	.1	100.0
	Every day	1	.0	.0	100.0
	Total	4885	100.0	100.0	

Use of substance in the past year without a prescription: Morphine

		Frequency	Percent	Valid Percent	Cumulative Percent
Valid	No answer	75	1.5	1.5	1.5
	Did not use	4758	97.4	97.4	98.9
	Once per year	24	.5	.5	99.4
	6 times a year	8	.2	.2	99.6
	Once a month	7	.1	.1	99.7
	Once a week	5	.1	.1	99.8
	3 times a week	3	.1	.1	99.9
	5 times a week	2	.0	.0	99.9
	Every day	3	.1	.1	100.0
	Total	4885	100.0	100.0	

Use of substance in the past year without a prescription: Methadone

		Frequency	Percent	Valid Percent	Cumulative Percent
Valid	No answer	76	1.6	1.6	1.6
	Did not use	4771	97.7	97.7	99.2
	Once per year	14	.3	.3	99.5
	6 times a year	5	.1	.1	99.6
	Once a month	4	.1	.1	99.7
	Once a week	2	.0	.0	99.7
	3 times a week	4	.1	.1	99.8
	5 times a week	4	.1	.1	99.9
	Every day	5	.1	.1	100.0
	Total	4885	100.0	100.0	

Age of first time use: Cigarettes

		Frequency	Percent	Valid Percent	Cumulative Percent
Valid	No answer	90	1.8	1.8	1.8
	Did not use	2812	57.6	57.6	59.4
	Under 10	55	1.1	1.1	60.5
	10-11	70	1.4	1.4	62.0
	12-13	202	4.1	4.1	66.1
	14-15	319	6.5	6.5	72.6
	16-17	549	11.2	11.2	83.9
	18-20	706	14.5	14.5	98.3
	21-25	74	1.5	1.5	99.8
	26+	8	.2	.2	100.0
	Total	4885	100.0	100.0	

Age of first time use: Cigars

		Frequency	Percent	Valid Percent	Cumulative Percent
Valid	No answer	123	2.5	2.5	2.5
	Did not use	2898	59.3	59.3	61.8
	Under 10	17	.3	.3	62.2
	10-11	14	.3	.3	62.5
	12-13	67	1.4	1.4	63.8
	14-15	195	4.0	4.0	67.8
	16-17	594	12.2	12.2	80.0
	18-20	875	17.9	17.9	97.9
	21-25	92	1.9	1.9	99.8
	26+	10	.2	.2	100.0
	Total	4885	100.0	100.0	

Age of first time use: Chewing or smokeless tobacco

		Frequency	Percent	Valid Percent	Cumulative Percent
Valid	No answer	175	3.6	3.6	3.6
	Did not use	4004	82.0	82.0	85.5
	Under 10	8	.2	.2	85.7
	10-11	12	.2	.2	86.0
	12-13	34	.7	.7	86.7
	14-15	112	2.3	2.3	88.9
	16-17	228	4.7	4.7	93.6
	18-20	268	5.5	5.5	99.1
	21-25	44	.9	.9	100.0
	Total	4885	100.0	100.0	

Age of first time use: Smoking tobacco with hooka or water pipe

		Frequency	Percent	Valid Percent	Cumulative Percent
Valid	No answer	152	3.1	3.1	3.1
	Did not use	3166	64.8	64.8	67.9
	Under 10	3	.1	.1	68.0
	10-11	3	.1	.1	68.0
	12-13	15	.3	.3	68.4
	14-15	78	1.6	1.6	69.9
	16-17	384	7.9	7.9	77.8
	18-20	951	19.5	19.5	97.3
	21-25	126	2.6	2.6	99.9
	26+	7	.1	.1	100.0
	Total	4885	100.0	100.0	

Age of first time use: Alcohol

		Frequency	Percent	Valid Percent	Cumulative Percent
Valid	No answer	33	.7	.7	.7
	Did not use	640	13.1	13.1	13.8
	Under 10	100	2.0	2.0	15.8
	10-11	59	1.2	1.2	17.0
	12-13	266	5.4	5.4	22.5
	14-15	793	16.2	16.2	38.7
	16-17	1305	26.7	26.7	65.4
	18-20	1476	30.2	30.2	95.6
	21-25	208	4.3	4.3	99.9
	26+	5	.1	.1	100.0
	Total	4885	100.0	100.0	

Age of first time use: Marijuana

		Frequency	Percent	Valid Percent	Cumulative Percent
Valid	No answer	127	2.6	2.6	2.6
	Did not use	3038	62.2	62.2	64.8
	Under 10	10	.2	.2	65.0
	10-11	12	.2	.2	65.2
	12-13	95	1.9	1.9	67.2
	14-15	307	6.3	6.3	73.5
	16-17	565	11.6	11.6	85.0
	18-20	646	13.2	13.2	98.3
	21-25	80	1.6	1.6	99.9
	26+	5	.1	.1	100.0
	Total	4885	100.0	100.0	

Age of first time use: Cocaine

		Frequency	Percent	Valid Percent	Cumulative Percent
Valid	No answer	167	3.4	3.4	3.4
	Did not use	4451	91.1	91.1	94.5
	Under 10	3	.1	.1	94.6
	10-11	5	.1	.1	94.7
	12-13	5	.1	.1	94.8
	14-15	20	.4	.4	95.2
	16-17	74	1.5	1.5	96.7
	18-20	121	2.5	2.5	99.2
	21-25	33	.7	.7	99.9
	26+	6	.1	.1	100.0
	Total	4885	100.0	100.0	

Age of first time use: Hallucinogens

		Frequency	Percent	Valid Percent	Cumulative Percent
Valid	No answer	167	3.4	3.4	3.4
	Did not use	4437	90.8	90.8	94.2
	Under 10	5	.1	.1	94.4
	10-11	2	.0	.0	94.4
	12-13	7	.1	.1	94.5
	14-15	22	.5	.5	95.0
	16-17	78	1.6	1.6	96.6
	18-20	150	3.1	3.1	99.7
	21-25	17	.3	.3	100.0
	Total	4885	100.0	100.0	

Age of first time use: Opiates

		Frequency	Percent	Valid Percent	Cumulative Percent
Valid	No answer	180	3.7	3.7	3.7
	Did not use	4601	94.2	94.2	97.9
	Under 10	2	.0	.0	97.9
	10-11	3	.1	.1	98.0
	12-13	8	.2	.2	98.1
	14-15	11	.2	.2	98.4
	16-17	27	.6	.6	98.9
	18-20	47	1.0	1.0	99.9
	21-25	3	.1	.1	99.9
	26+	3	.1	.1	100.0
	Total	4885	100.0	100.0	

Age of first time use: Designer drugs

		Frequency	Percent	Valid Percent	Cumulative Percent
Valid	No answer	167	3.4	3.4	3.4
	Did not use	4538	92.9	92.9	96.3
	Under 10	4	.1	.1	96.4
	10-11	2	.0	.0	96.4
	12-13	5	.1	.1	96.5
	14-15	12	.2	.2	96.8
	16-17	47	1.0	1.0	97.7
	18-20	85	1.7	1.7	99.5
	21-25	22	.5	.5	99.9
	26+	3	.1	.1	100.0
	Total	4885	100.0	100.0	

Age of first time use: Inhalants

		Frequency	Percent	Valid Percent	Cumulative Percent
Valid	No answer	170	3.5	3.5	3.5
	Did not use	4584	93.8	93.8	97.3
	Under 10	6	.1	.1	97.4
	10-11	8	.2	.2	97.6
	12-13	31	.6	.6	98.2
	14-15	28	.6	.6	98.8
	16-17	29	.6	.6	99.4
	18-20	23	.5	.5	99.9
	21-25	5	.1	.1	100.0
	26+	1	.0	.0	100.0
	Total	4885	100.0	100.0	

Age of first time use: Steroids

		Frequency	Percent	Valid Percent	Cumulative Percent
Valid	No answer	177	3.6	3.6	3.6
	Did not use	4674	95.7	95.7	99.3
	Under 10	5	.1	.1	99.4
	12-13	7	.1	.1	99.5
	14-15	3	.1	.1	99.6
	16-17	6	.1	.1	99.7
	18-20	6	.1	.1	99.9
	21-25	4	.1	.1	99.9
	26+	3	.1	.1	100.0
	Total	4885	100.0	100.0	

Age of first time use: Other illegal drugs

		Frequency	Percent	Valid Percent	Cumulative Percent
Valid	No answer	182	3.7	3.7	3.7
	Did not use	4538	92.9	92.9	96.6
	Under 10	5	.1	.1	96.7
	10-11	8	.2	.2	96.9
	12-13	10	.2	.2	97.1
	14-15	31	.6	.6	97.7
	16-17	52	1.1	1.1	98.8
	18-20	51	1.0	1.0	99.8
	21-25	6	.1	.1	100.0
	26+	2	.0	.0	100.0
	Total	4885	100.0	100.0	

Age of first time use: Prescription pills not prescribed to you

		Frequency	Percent	Valid Percent	Cumulative Percent
Valid	No answer	162	3.3	3.3	3.3
	Did not use	4035	82.6	82.6	85.9
	Under 10	10	.2	.2	86.1
	10-11	6	.1	.1	86.2
	12-13	29	.6	.6	86.8
	14-15	94	1.9	1.9	88.8
	16-17	199	4.1	4.1	92.8
	18-20	290	5.9	5.9	98.8
	21-25	50	1.0	1.0	99.8
	26+	10	.2	.2	100.0
	Total	4885	100.0	100.0	

Age of first time use: Prescription medicines to get high

		Frequency	Percent	Valid Percent	Cumulative Percent
Valid	No answer	171	3.5	3.5	3.5
	Did not use	4341	88.9	88.9	92.4
	Under 10	4	.1	.1	92.4
	10-11	4	.1	.1	92.5
	12-13	24	.5	.5	93.0
	14-15	63	1.3	1.3	94.3
	16-17	120	2.5	2.5	96.8
	18-20	135	2.8	2.8	99.5
	21-25	17	.3	.3	99.9
	26+	6	.1	.1	100.0
	Total	4885	100.0	100.0	

Age of first time use: Over-the-counter medications to get high

		Frequency	Percent	Valid Percent	Cumulative Percent
Valid	No answer	176	3.6	3.6	3.6
	Did not use	4501	92.1	92.1	95.7
	Under 10	7	.1	.1	95.9
	10-11	6	.1	.1	96.0
	12-13	17	.3	.3	96.4
	14-15	50	1.0	1.0	97.4
	16-17	69	1.4	1.4	98.8
	18-20	47	1.0	1.0	99.8
	21-25	9	.2	.2	99.9
	26+	3	.1	.1	100.0
	Total	4885	100.0	100.0	

Age of first time use: Methamphetamine

		Frequency	Percent	Valid Percent	Cumulative Percent
Valid	No answer	206	4.2	4.2	4.2
	Did not use	4612	94.4	94.4	98.6
	Under 10	6	.1	.1	98.8
	10-11	1	.0	.0	98.8
	12-13	4	.1	.1	98.9
	14-15	11	.2	.2	99.1
	16-17	15	.3	.3	99.4
	18-20	19	.4	.4	99.8
	21-25	7	.1	.1	99.9
	26+	4	.1	.1	100.0
	Total	4885	100.0	100.0	

Alcohol use in the past 6 months

		Frequency	Percent	Valid Percent	Cumulative Percent
Valid	Yes	3859	79.0	79.0	79.0
	No	765	15.7	15.7	94.7
	N/A - Paper version	261	5.3	5.3	100.0
	Total	4885	100.0	100.0	

Consequences of alcohol use: Spouse, partner or parents worried or complained about your drinking

		Frequency	Percent	Valid Percent	Cumulative Percent
Valid	No answer	177	3.6	3.6	3.6
	Never	4032	82.5	82.5	86.2
	Once	300	6.1	6.1	92.3
	Twice	155	3.2	3.2	95.5
	3-5 times	152	3.1	3.1	98.6
	6-9 times	28	.6	.6	99.2
	10+ times	41	.8	.8	100.0
	Total	4885	100.0	100.0	

Consequences of alcohol use: Felt bad about your drinking

		Frequency	Percent	Valid Percent	Cumulative Percent
Valid	No answer	184	3.8	3.8	3.8
	Never	3215	65.8	65.8	69.6
	Once	622	12.7	12.7	82.3
	Twice	377	7.7	7.7	90.0
	3-5 times	342	7.0	7.0	97.0
	6-9 times	76	1.6	1.6	98.6
	10+ times	69	1.4	1.4	100.0
	Total	4885	100.0	100.0	

Consequences of alcohol use: Been unable to stop drinking when you wanted to

		Frequency	Percent	Valid Percent	Cumulative Percent
Valid	No answer	196	4.0	4.0	4.0
	Never	4251	87.0	87.0	91.0
	Once	113	2.3	2.3	93.3
	Twice	85	1.7	1.7	95.1
	3-5 times	85	1.7	1.7	96.8
	6-9 times	38	.8	.8	97.6
	10+ times	117	2.4	2.4	100.0
	Total	4885	100.0	100.0	

Consequences of alcohol use: Attended Alcoholics Anonymous

		Frequency	Percent	Valid Percent	Cumulative Percent
Valid	No answer	195	4.0	4.0	4.0
	Never	4618	94.5	94.5	98.5
	Once	26	.5	.5	99.1
	Twice	14	.3	.3	99.3
	3-5 times	8	.2	.2	99.5
	6-9 times	8	.2	.2	99.7
	10+ times	16	.3	.3	100.0
	Total	4885	100.0	100.0	

Consequences of alcohol use: Created problems between you and your spouse or partner

		Frequency	Percent	Valid Percent	Cumulative Percent
Valid	No answer	186	3.8	3.8	3.8
	Never	4151	85.0	85.0	88.8
	Once	220	4.5	4.5	93.3
	Twice	157	3.2	3.2	96.5
	3-5 times	117	2.4	2.4	98.9
	6-9 times	30	.6	.6	99.5
	10+ times	24	.5	.5	100.0
	Total	4885	100.0	100.0	

Consequences of alcohol use: Gotten into trouble at work or school because of drinking

		Frequency	Percent	Valid Percent	Cumulative Percent
Valid	No answer	188	3.8	3.8	3.8
	Never	4375	89.6	89.6	93.4
	Once	224	4.6	4.6	98.0
	Twice	54	1.1	1.1	99.1
	3-5 times	27	.6	.6	99.7
	6-9 times	5	.1	.1	99.8
	10+ times	12	.2	.2	100.0
	Total	4885	100.0	100.0	

Consequences of alcohol use: Neglected your obligations, family, or work due to drinking

		Frequency	Percent	Valid Percent	Cumulative Percent
Valid	No answer	191	3.9	3.9	3.9
	Never	4414	90.4	90.4	94.3
	Once	115	2.4	2.4	96.6
	Twice	70	1.4	1.4	98.1
	3-5 times	51	1.0	1.0	99.1
	6-9 times	16	.3	.3	99.4
	10+ times	28	.6	.6	100.0
	Total	4885	100.0	100.0	

Consequences of alcohol use: Gone to anyone for help to reduce your drinking

		Frequency	Percent	Valid Percent	Cumulative Percent
Valid	No answer	186	3.8	3.8	3.8
	Never	4583	93.8	93.8	97.6
	Once	54	1.1	1.1	98.7
	Twice	27	.6	.6	99.3
	3-5 times	16	.3	.3	99.6
	6-9 times	10	.2	.2	99.8
	10+ times	9	.2	.2	100.0
	Total	4885	100.0	100.0	

Consequences of alcohol use: Been in the hospital because of drinking

		Frequency	Percent	Valid Percent	Cumulative Percent
Valid	No answer	196	4.0	4.0	4.0
	Never	4633	94.8	94.8	98.9
	Once	41	.8	.8	99.7
	Twice	5	.1	.1	99.8
	3-5 times	3	.1	.1	99.9
	6-9 times	4	.1	.1	99.9
	10+ times	3	.1	.1	100.0
	Total	4885	100.0	100.0	

Consequences of alcohol use: Been arrested even for a few hours because of drinking

		Frequency	Percent	Valid Percent	Cumulative Percent
Valid	No answer	197	4.0	4.0	4.0
	Never	4592	94.0	94.0	98.0
	Once	74	1.5	1.5	99.5
	Twice	10	.2	.2	99.8
	3-5 times	4	.1	.1	99.8
	6-9 times	2	.0	.0	99.9
	10+ times	6	.1	.1	100.0
	Total	4885	100.0	100.0	

Consequences of alcohol use: Been arrested for drunk driving or driving after drinking

		Frequency	Percent	Valid Percent	Cumulative Percent
Valid	No answer	191	3.9	3.9	3.9
	Never	4655	95.3	95.3	99.2
	Once	23	.5	.5	99.7
	Twice	7	.1	.1	99.8
	3-5 times	3	.1	.1	99.9
	6-9 times	2	.0	.0	99.9
	10+ times	4	.1	.1	100.0
	Total	4885	100.0	100.0	

Consequences of alcohol use: Driven a car while under the influence

		Frequency	Percent	Valid Percent	Cumulative Percent
Valid	No answer	194	4.0	4.0	4.0
	Never	3848	78.8	78.8	82.7
	Once	357	7.3	7.3	90.1
	Twice	201	4.1	4.1	94.2
	3-5 times	168	3.4	3.4	97.6
	6-9 times	48	1.0	1.0	98.6
	10+ times	69	1.4	1.4	100.0
	Total	4885	100.0	100.0	

Consequences of alcohol use: Gotten into physical fights when drinking

		Frequency	Percent	Valid Percent	Cumulative Percent
Valid	No answer	222	4.5	4.5	4.5
	Never	4350	89.0	89.0	93.6
	Once	182	3.7	3.7	97.3
	Twice	83	1.7	1.7	99.0
	3-5 times	32	.7	.7	99.7
	6-9 times	6	.1	.1	99.8
	10+ times	10	.2	.2	100.0
	Total	4885	100.0	100.0	

Consequences of alcohol use: Experienced unwanted sexual attention

		Frequency	Percent	Valid Percent	Cumulative Percent
Valid	No answer	197	4.0	4.0	4.0
	Never	4150	85.0	85.0	89.0
	Once	295	6.0	6.0	95.0
	Twice	142	2.9	2.9	97.9
	3-5 times	68	1.4	1.4	99.3
	6-9 times	11	.2	.2	99.5
	10+ times	22	.5	.5	100.0
	Total	4885	100.0	100.0	

Consequences of alcohol use: Engaged in risky sexual behavior

		Frequency	Percent	Valid Percent	Cumulative Percent
Valid	No answer	191	3.9	3.9	3.9
	Never	4113	84.2	84.2	88.1
	Once	303	6.2	6.2	94.3
	Twice	136	2.8	2.8	97.1
	3-5 times	86	1.8	1.8	98.9
	6-9 times	23	.5	.5	99.3
	10+ times	33	.7	.7	100.0
	Total	4885	100.0	100.0	

Consequences of alcohol use: Missed class or assignments

		Frequency	Percent	Valid Percent	Cumulative Percent
Valid	No answer	206	4.2	4.2	4.2
	Never	3726	76.3	76.3	80.5
	Once	394	8.1	8.1	88.6
	Twice	258	5.3	5.3	93.8
	3-5 times	186	3.8	3.8	97.6
	6-9 times	56	1.1	1.1	98.8
	10+ times	59	1.2	1.2	100.0
	Total	4885	100.0	100.0	

Any drug use in the past year

		Frequency	Percent	Valid Percent	Cumulative Percent
Valid	Yes	1878	38.4	38.4	38.4
	No	2746	56.2	56.2	94.7
	N/A - Paper version	261	5.3	5.3	100.0
	Total	4885	100.0	100.0	

Consequences of drug use: Abused more than one drug at a time

		Frequency	Percent	Valid Percent	Cumulative Percent
Valid	No answer	2884	59.0	59.0	59.0
	Never	1468	30.1	30.1	89.1
	Once	112	2.3	2.3	91.4
	Twice	96	2.0	2.0	93.3
	3-5 times	123	2.5	2.5	95.9
	6-9 times	48	1.0	1.0	96.8
	10+ times	154	3.2	3.2	100.0
	Total	4885	100.0	100.0	

Consequences of drug use: Been unable to stop using drugs when you wanted to

		Frequency	Percent	Valid Percent	Cumulative Percent
Valid	No answer	2897	59.3	59.3	59.3
	Never	1822	37.3	37.3	96.6
	Once	20	.4	.4	97.0
	Twice	31	.6	.6	97.6
	3-5 times	26	.5	.5	98.2
	6-9 times	13	.3	.3	98.4
	10+ times	76	1.6	1.6	100.0
	Total	4885	100.0	100.0	

Consequences of drug use: Had blackouts or flashbacks as a result of drug use

		Frequency	Percent	Valid Percent	Cumulative Percent
Valid	No answer	2899	59.3	59.3	59.3
	Never	1683	34.5	34.5	93.8
	Once	87	1.8	1.8	95.6
	Twice	71	1.5	1.5	97.0
	3-5 times	68	1.4	1.4	98.4
	6-9 times	27	.6	.6	99.0
	10+ times	50	1.0	1.0	100.0
	Total	4885	100.0	100.0	

Consequences of drug use: Felt bad or guilty about your drug use

		Frequency	Percent	Valid Percent	Cumulative Percent
Valid	No answer	2898	59.3	59.3	59.3
	Never	1445	29.6	29.6	88.9
	Once	218	4.5	4.5	93.4
	Twice	129	2.6	2.6	96.0
	3-5 times	103	2.1	2.1	98.1
	6-9 times	24	.5	.5	98.6
	10+ times	68	1.4	1.4	100.0
	Total	4885	100.0	100.0	

Consequences of drug use: Had your spouse or partner complain about your involvement with drugs

		Frequency	Percent	Valid Percent	Cumulative Percent
Valid	No answer	2894	59.2	59.2	59.2
	Never	1795	36.7	36.7	96.0
	Once	70	1.4	1.4	97.4
	Twice	48	1.0	1.0	98.4
	3-5 times	39	.8	.8	99.2
	6-9 times	14	.3	.3	99.5
	10+ times	25	.5	.5	100.0
	Total	4885	100.0	100.0	

Consequences of drug use: Neglected your family because of your use of drugs

		Frequency	Percent	Valid Percent	Cumulative Percent
Valid	No answer	2900	59.4	59.4	59.4
	Never	1870	38.3	38.3	97.6
	Once	33	.7	.7	98.3
	Twice	28	.6	.6	98.9
	3-5 times	23	.5	.5	99.4
	6-9 times	12	.2	.2	99.6
	10+ times	19	.4	.4	100.0
	Total	4885	100.0	100.0	

Consequences of drug use: Engaged in illegal activities in order to obtain drugs

		Frequency	Percent	Valid Percent	Cumulative Percent
Valid	No answer	2902	59.4	59.4	59.4
	Never	1821	37.3	37.3	96.7
	Once	30	.6	.6	97.3
	Twice	28	.6	.6	97.9
	3-5 times	38	.8	.8	98.6
	6-9 times	14	.3	.3	98.9
	10+ times	52	1.1	1.1	100.0
	Total	4885	100.0	100.0	

Consequences of drug use: Gotten into physical fights because you were using drugs

		Frequency	Percent	Valid Percent	Cumulative Percent
Valid	No answer	2904	59.4	59.4	59.4
	Never	1920	39.3	39.3	98.8
	Once	24	.5	.5	99.2
	Twice	17	.3	.3	99.6
	3-5 times	9	.2	.2	99.8
	6-9 times	5	.1	.1	99.9
	10+ times	6	.1	.1	100.0
	Total	4885	100.0	100.0	

Consequences of drug use: Experienced withdrawal symptoms when you stopped taking drugs

		Frequency	Percent	Valid Percent	Cumulative Percent
Valid	No answer	2899	59.3	59.3	59.3
	Never	1842	37.7	37.7	97.1
	Once	43	.9	.9	97.9
	Twice	30	.6	.6	98.5
	3-5 times	32	.7	.7	99.2
	6-9 times	19	.4	.4	99.6
	10+ times	20	.4	.4	100.0
	Total	4885	100.0	100.0	

Consequences of drug use: Had medical problems as a result of your drug use

		Frequency	Percent	Valid Percent	Cumulative Percent
Valid	No answer	2903	59.4	59.4	59.4
	Never	1873	38.3	38.3	97.8
	Once	36	.7	.7	98.5
	Twice	21	.4	.4	98.9
	3-5 times	21	.4	.4	99.4
	6-9 times	10	.2	.2	99.6
	10+ times	21	.4	.4	100.0
	Total	4885	100.0	100.0	

Consequences of drug use: Driven a car while under the influence of drugs

		Frequency	Percent	Valid Percent	Cumulative Percent
Valid	No answer	2901	59.4	59.4	59.4
	Never	1542	31.6	31.6	91.0
	Once	110	2.3	2.3	93.2
	Twice	86	1.8	1.8	95.0
	3-5 times	71	1.5	1.5	96.4
	6-9 times	30	.6	.6	97.0
	10+ times	145	3.0	3.0	100.0
	Total	4885	100.0	100.0	

Consequences of drug use: Gotten in trouble at work because of drug use

		Frequency	Percent	Valid Percent	Cumulative Percent
Valid	No answer	2911	59.6	59.6	59.6
	Never	1932	39.5	39.5	99.1
	Once	10	.2	.2	99.3
	Twice	14	.3	.3	99.6
	3-5 times	7	.1	.1	99.8
	6-9 times	2	.0	.0	99.8
	10+ times	9	.2	.2	100.0
	Total	4885	100.0	100.0	

Consequences of drug use: Been in very vulnerable situations

		Frequency	Percent	Valid Percent	Cumulative Percent
Valid	No answer	2901	59.4	59.4	59.4
	Never	1872	38.3	38.3	97.7
	Once	48	1.0	1.0	98.7
	Twice	23	.5	.5	99.2
	3-5 times	14	.3	.3	99.4
	6-9 times	15	.3	.3	99.8
	10+ times	12	.2	.2	100.0
	Total	4885	100.0	100.0	

Consequences of drug use: Engaged in risky sexual behavior

		Frequency	Percent	Valid Percent	Cumulative Percent
Valid	No answer	2906	59.5	59.5	59.5
	Never	1815	37.2	37.2	96.6
	Once	65	1.3	1.3	98.0
	Twice	40	.8	.8	98.8
	3-5 times	25	.5	.5	99.3
	6-9 times	8	.2	.2	99.5
	10+ times	26	.5	.5	100.0
	Total	4885	100.0	100.0	

Consequences of drug use: Failed a class because of drug use

		Frequency	Percent	Valid Percent	Cumulative Percent
Valid	No answer	2907	59.5	59.5	59.5
	Never	1930	39.5	39.5	99.0
	Once	14	.3	.3	99.3
	Twice	16	.3	.3	99.6
	3-5 times	9	.2	.2	99.8
	6-9 times	5	.1	.1	99.9
	10+ times	4	.1	.1	100.0
	Total	4885	100.0	100.0	

Consequences of drug use: Missed class or assignments due to drug use

		Frequency	Percent	Valid Percent	Cumulative Percent
Valid	No answer	2909	59.5	59.5	59.5
	Never	1773	36.3	36.3	95.8
	Once	60	1.2	1.2	97.1
	Twice	46	.9	.9	98.0
	3-5 times	45	.9	.9	98.9
	6-9 times	21	.4	.4	99.4
	10+ times	31	.6	.6	100.0
	Total	4885	100.0	100.0	

Perception of peer approval/disapproval: Trying marijuana once or twice

		Frequency	Percent	Valid Percent	Cumulative Percent
Valid	No answer	58	1.2	1.2	1.2
	Strongly approve	578	11.8	11.8	13.0
	Somewhat approve	1606	32.9	32.9	45.9
	Neither approve or disapprove	1546	31.6	31.6	77.5
	Somewhat disapprove	734	15.0	15.0	92.6
	Strongly disapprove	363	7.4	7.4	100.0
	Total	4885	100.0	100.0	

Perception of peer approval/disapproval: Smoking marijuana occasionally

		Frequency	Percent	Valid Percent	Cumulative Percent
Valid	No answer	62	1.3	1.3	1.3
	Strongly approve	276	5.6	5.6	6.9
	Somewhat approve	1147	23.5	23.5	30.4
	Neither approve or disapprove	1452	29.7	29.7	60.1
	Somewhat disapprove	1318	27.0	27.0	87.1
	Strongly disapprove	630	12.9	12.9	100.0
	Total	4885	100.0	100.0	

Perception of peer approval/disapproval: Smoking marijuana regularly

		Frequency	Percent	Valid Percent	Cumulative Percent
Valid	No answer	69	1.4	1.4	1.4
	Strongly approve	139	2.8	2.8	4.3
	Somewhat approve	452	9.3	9.3	13.5
	Neither approve or disapprove	981	20.1	20.1	33.6
	Somewhat disapprove	1585	32.4	32.4	66.0
	Strongly disapprove	1659	34.0	34.0	100.0
	Total	4885	100.0	100.0	

Perception of peer approval/disapproval: Trying cocaine once or twice

		Frequency	Percent	Valid Percent	Cumulative Percent
Valid	No answer	69	1.4	1.4	1.4
	Strongly approve	67	1.4	1.4	2.8
	Somewhat approve	237	4.9	4.9	7.6
	Neither approve or disapprove	611	12.5	12.5	20.1
	Somewhat disapprove	1483	30.4	30.4	50.5
	Strongly disapprove	2418	49.5	49.5	100.0
	Total	4885	100.0	100.0	

Perception of peer approval/disapproval: Taking cocaine regularly

		Frequency	Percent	Valid Percent	Cumulative Percent
Valid	No answer	67	1.4	1.4	1.4
	Strongly approve	53	1.1	1.1	2.5
	Somewhat approve	68	1.4	1.4	3.8
	Neither approve or disapprove	343	7.0	7.0	10.9
	Somewhat disapprove	581	11.9	11.9	22.8
	Strongly disapprove	3773	77.2	77.2	100.0
	Total	4885	100.0	100.0	

Perception of peer approval/disapproval: Trying LSD once or twice

		Frequency	Percent	Valid Percent	Cumulative Percent
Valid	No answer	71	1.5	1.5	1.5
	Strongly approve	70	1.4	1.4	2.9
	Somewhat approve	218	4.5	4.5	7.3
	Neither approve or disapprove	649	13.3	13.3	20.6
	Somewhat disapprove	1273	26.1	26.1	46.7
	Strongly disapprove	2604	53.3	53.3	100.0
	Total	4885	100.0	100.0	

Perception of peer approval/disapproval: Taking LSD regularly

		Frequency	Percent	Valid Percent	Cumulative Percent
Valid	No answer	74	1.5	1.5	1.5
	Strongly approve	52	1.1	1.1	2.6
	Somewhat approve	68	1.4	1.4	4.0
	Neither approve or disapprove	357	7.3	7.3	11.3
	Somewhat disapprove	614	12.6	12.6	23.8
	Strongly disapprove	3720	76.2	76.2	100.0
	Total	4885	100.0	100.0	

Perception of peer approval/disapproval: Trying amphetamine once or twice

		Frequency	Percent	Valid Percent	Cumulative Percent
Valid	No answer	79	1.6	1.6	1.6
	Strongly approve	64	1.3	1.3	2.9
	Somewhat approve	215	4.4	4.4	7.3
	Neither approve or disapprove	651	13.3	13.3	20.7
	Somewhat disapprove	1189	24.3	24.3	45.0
	Strongly disapprove	2687	55.0	55.0	100.0
	Total	4885	100.0	100.0	

Perception of peer approval/disapproval: Taking amphetamine regularly

		Frequency	Percent	Valid Percent	Cumulative Percent
Valid	No answer	109	2.2	2.2	2.2
	Strongly approve	57	1.2	1.2	3.4
	Somewhat approve	92	1.9	1.9	5.3
	Neither approve or disapprove	422	8.6	8.6	13.9
	Somewhat disapprove	600	12.3	12.3	26.2
	Strongly disapprove	3605	73.8	73.8	100.0
	Total	4885	100.0	100.0	

Perception of peer approval/disapproval: Taking one or two drinks of an alcoholic beverage nearly every day

		Frequency	Percent	Valid Percent	Cumulative Percent
Valid	No answer	64	1.3	1.3	1.3
	Strongly approve	579	11.9	11.9	13.2
	Somewhat approve	1151	23.6	23.6	36.7
	Neither approve or disapprove	1544	31.6	31.6	68.3
	Somewhat disapprove	1083	22.2	22.2	90.5
	Strongly disapprove	464	9.5	9.5	100.0
	Total	4885	100.0	100.0	

Perception of peer approval/disapproval: Taking three or four drinks nearly every day

		Frequency	Percent	Valid Percent	Cumulative Percent
Valid	No answer	64	1.3	1.3	1.3
	Strongly approve	251	5.1	5.1	6.4
	Somewhat approve	601	12.3	12.3	18.8
	Neither approve or disapprove	1056	21.6	21.6	40.4
	Somewhat disapprove	1439	29.5	29.5	69.8
	Strongly disapprove	1474	30.2	30.2	100.0
	Total	4885	100.0	100.0	

Perception of peer approval/disapproval: Having five or more drinks in one sitting

		Frequency	Percent	Valid Percent	Cumulative Percent
Valid	No answer	86	1.8	1.8	1.8
	Strongly approve	644	13.2	13.2	14.9
	Somewhat approve	1178	24.1	24.1	39.1
	Neither approve or disapprove	1346	27.6	27.6	66.6
	Somewhat disapprove	789	16.2	16.2	82.8
	Strongly disapprove	842	17.2	17.2	100.0
	Total	4885	100.0	100.0	

Perception of peer approval/disapproval: Taking steroids for body building or improved athletic performance

		Frequency	Percent	Valid Percent	Cumulative Percent
Valid	No answer	72	1.5	1.5	1.5
	Strongly approve	82	1.7	1.7	3.2
	Somewhat approve	281	5.8	5.8	8.9
	Neither approve or disapprove	973	19.9	19.9	28.8
	Somewhat disapprove	1444	29.6	29.6	58.4
	Strongly disapprove	2033	41.6	41.6	100.0
	Total	4885	100.0	100.0	

Age

		Frequency	Percent	Valid Percent	Cumulative Percent
Valid	21 or older	2246	46.0	46.0	46.0
	Under 21	2378	48.7	48.7	94.7
	N/A - Paper version	261	5.3	5.3	100.0
	Total	4885	100.0	100.0	

Students under 21: 1st easiest way to get alcohol

		Frequency	Percent	Valid Percent	Cumulative Percent
Valid	No answer	57	2.8	2.8	2.8
	Older friends	905	44.9	44.9	47.8
	Older siblings	72	3.6	3.6	51.3
	On-campus parties	318	15.8	15.8	67.1
	Fraternity or sorority houses	109	5.4	5.4	72.5
	Off-campus private parties	217	10.8	10.8	83.3
	Someone else on campus	162	8.0	8.0	91.4
	Buying it yourself	79	3.9	3.9	95.3
	Stealing it from store	8	.4	.4	95.7
	From parents without their knowledge	8	.4	.4	96.1
	From parents with their knowledge	79	3.9	3.9	100.0
	Total	2014	100.0	100.0	

Students under 21: 2nd easiest way to get alcohol

		Frequency	Percent	Valid Percent	Cumulative Percent
Valid	No answer	84	4.2	4.2	4.2
	Older friends	367	18.2	18.2	22.4
	Older siblings	172	8.5	8.5	30.9
	On-campus parties	408	20.3	20.3	51.2
	Fraternity or sorority houses	125	6.2	6.2	57.4
	Off-campus private parties	511	25.4	25.4	82.8
	Someone else on campus	215	10.7	10.7	93.4
	Buying it yourself	40	2.0	2.0	95.4
	Stealing it from store	8	.4	.4	95.8
	From parents without their knowledge	27	1.3	1.3	97.2
	From parents with their knowledge	57	2.8	2.8	100.0
	Total	2014	100.0	100.0	

Students under 21: 3rd easiest way to get alcohol

		Frequency	Percent	Valid Percent	Cumulative Percent
Valid	No answer	112	5.6	5.6	5.6
	Older friends	260	12.9	12.9	18.5
	Older siblings	133	6.6	6.6	25.1
	On-campus parties	317	15.7	15.7	40.8
	Fraternity or sorority houses	147	7.3	7.3	48.1
	Off-campus private parties	448	22.2	22.2	70.4
	Someone else on campus	321	15.9	15.9	86.3
	Buying it yourself	86	4.3	4.3	90.6
	Stealing it from store	14	.7	.7	91.3
	From parents without their knowledge	45	2.2	2.2	93.5
	From parents with their knowledge	131	6.5	6.5	100.0
	Total	2014	100.0	100.0	

Students under 21: Never bought alcohol

		Frequency	Percent	Valid Percent	Cumulative Percent
Valid	No answer	2712	55.5	55.5	55.5
	I do not drink alcohol	640	13.1	13.1	68.6
	I drink alcohol but I do not buy it	1533	31.4	31.4	100.0
	Total	4885	100.0	100.0	

Students under 21: Most common method to purchase alcohol

		Frequency	Percent	Valid Percent	Cumulative Percent
Valid	No answer	2224	85.3	85.3	85.3
	Used a fake ID	139	5.3	5.3	90.6
	Used someone else's ID	86	3.3	3.3	93.9
	Bought alcohol without using an ID	159	6.1	6.1	100.0
	Total	2608	100.0	100.0	

Students under 21: Easiest place to purchase alcohol

		Frequency	Percent	Valid Percent	Cumulative Percent
Valid	No answer	2227	85.4	85.4	85.4
	Bar	67	2.6	2.6	88.0
	Restaurant	40	1.5	1.5	89.5
	Grocery store	66	2.5	2.5	92.0
	Discount store	41	1.6	1.6	93.6
	Convenience store	30	1.2	1.2	94.7
	Drug store	18	.7	.7	95.4
	Liquor store	95	3.6	3.6	99.1
	Internet	18	.7	.7	99.8
	Winery or microbrewery	6	.2	.2	100.0
	Total	2608	100.0	100.0	

Usual type of alcohol

		Frequency	Percent	Valid Percent	Cumulative Percent
Valid	No answer	85	1.7	1.7	1.7
	I did not drink alcohol	1045	21.4	21.4	23.1
	Beer	1749	35.8	35.8	58.9
	Malt beverages	147	3.0	3.0	61.9
	Wine coolers	28	.6	.6	62.5
	Wine	404	8.3	8.3	70.8
	Liquor	1380	28.2	28.2	99.0
	Some other type	47	1.0	1.0	100.0
	Total	4885	100.0	100.0	

Frequency of binge drinking during the last two weeks

		Frequency	Percent	Valid Percent	Cumulative Percent
Valid	No answer	41	.8	.8	.8
	0	2501	51.2	51.2	52.0
	1	751	15.4	15.4	67.4
	2	550	11.3	11.3	78.7
	3	349	7.1	7.1	85.8
	4	302	6.2	6.2	92.0
	5	141	2.9	2.9	94.9
	6	117	2.4	2.4	97.3
	7	45	.9	.9	98.2
	8	29	.6	.6	98.8
	9+	59	1.2	1.2	100.0
	Total	4885	100.0	100.0	

Number of days of binge drinking during the last 30 days

		Frequency	Percent	Valid Percent	Cumulative Percent
Valid	1	558	21.0	21.0	21.0
	2	439	16.5	16.5	37.6
	3	268	10.1	10.1	47.6
	4	262	9.9	9.9	57.5
	5	185	7.0	7.0	64.5
	6	195	7.3	7.3	71.8
	7	115	4.3	4.3	76.2
	8	155	5.8	5.8	82.0
	9	70	2.6	2.6	84.6
	10	137	5.2	5.2	89.8
	11	24	.9	.9	90.7
	12	78	2.9	2.9	93.6
	13	26	1.0	1.0	94.6
	14	21	.8	.8	95.4
	15	28	1.1	1.1	96.5
	16	20	.8	.8	97.2
	17	10	.4	.4	97.6
	18	16	.6	.6	98.2
	19	2	.1	.1	98.3
	20	13	.5	.5	98.8
	21	8	.3	.3	99.1
	22	4	.2	.2	99.2

Number of days of binge drinking during the last 30 days

		Frequency	Percent	Valid Percent	Cumulative Percent
Valid	23	2	.1	.1	99.3
	25	2	.1	.1	99.4
	26	1	.0	.0	99.4
	27	6	.2	.2	99.6
	28	3	.1	.1	99.7
	29	2	.1	.1	99.8
	30	5	.2	.2	100.0
	Total	2655	100.0	100.0	

Perceived number of alcoholic drinks consumed by the typical student at the last party

		Frequency	Percent	Valid Percent	Cumulative Percent
Valid	No answer	11	.2	.2	.2
	0	109	2.2	2.2	2.5
	1	19	.4	.4	2.8
	2	117	2.4	2.4	5.2
	3	468	9.6	9.6	14.8
	4	676	13.8	13.8	28.7
	5	998	20.4	20.4	49.1
	6	739	15.1	15.1	64.2
	7	530	10.8	10.8	75.1
	8	411	8.4	8.4	83.5
	9	85	1.7	1.7	85.2
	10	398	8.1	8.1	93.4
	11	19	.4	.4	93.8
	12	103	2.1	2.1	95.9
	13	12	.2	.2	96.1
	14	10	.2	.2	96.3
	15	71	1.5	1.5	97.8
	16	4	.1	.1	97.9
	17	3	.1	.1	97.9
	18	5	.1	.1	98.0
	19	3	.1	.1	98.1
	20	24	.5	.5	98.6
	21	1	.0	.0	98.6
	22	1	.0	.0	98.6
	23	3	.1	.1	98.7

**Perceived number of alcoholic drinks consumed by the typical student
at the last party**

		Frequency	Percent	Valid Percent	Cumulative Percent
Valid	24	1	.0	.0	98.7
	25	9	.2	.2	98.9
	27	1	.0	.0	98.9
	30	5	.1	.1	99.0
	35	2	.0	.0	99.0
	40	5	.1	.1	99.1
	41	1	.0	.0	99.2
	45	1	.0	.0	99.2
	47	1	.0	.0	99.2
	50	8	.2	.2	99.4
	52	1	.0	.0	99.4
	55	2	.0	.0	99.4
	60	1	.0	.0	99.4
	69	1	.0	.0	99.5
	75	2	.0	.0	99.5
	77	6	.1	.1	99.6
	78	1	.0	.0	99.7
	80	1	.0	.0	99.7
	87	1	.0	.0	99.7
	99	15	.3	.3	100.0
	Total	4885	100.0	100.0	

Gender

		Frequency	Percent	Valid Percent	Cumulative Percent
Valid	Male	2098	42.9	42.9	42.9
	Female	2787	57.1	57.1	100.0
	Total	4885	100.0	100.0	

Ethnicity

		Frequency	Percent	Valid Percent	Cumulative Percent
Valid	No answer	27	.6	.6	.6
	Hispanic	270	5.5	5.5	6.1
	Non-Hispanic	4588	93.9	93.9	100.0
	Total	4885	100.0	100.0	

Race

		Frequency	Percent	Valid Percent	Cumulative Percent
Valid	No answer	34	.7	.7	.7
	White	4247	86.9	86.9	87.6
	Black	113	2.3	2.3	89.9
	Asian	179	3.7	3.7	93.6
	Native American or Alaskan Native	21	.4	.4	94.0
	Hawaiian or Pacific Islander	22	.5	.5	94.5
	More than one race	146	3.0	3.0	97.5
	Other	123	2.5	2.5	100.0
	Total	4885	100.0	100.0	

Marital status

		Frequency	Percent	Valid Percent	Cumulative Percent
Valid	No answer	25	.5	.5	.5
	Single, never married	4321	88.5	88.5	89.0
	Single, living with partner	190	3.9	3.9	92.9
	Married	280	5.7	5.7	98.6
	Separated	5	.1	.1	98.7
	Divorced	47	1.0	1.0	99.7
	Widowed	17	.3	.3	100.0
	Total	4885	100.0	100.0	

Employment status

		Frequency	Percent	Valid Percent	Cumulative Percent
Valid	No answer	12	.2	.2	.2
	Full-time	357	7.3	7.3	7.6
	Part-time	2012	41.2	41.2	48.7
	No	2504	51.3	51.3	100.0
	Total	4885	100.0	100.0	

Approximate GPA

		Frequency	Percent	Valid Percent	Cumulative Percent
Valid	No answer	12	.2	.2	.2
	A	2254	46.1	46.1	46.4
	B	2192	44.9	44.9	91.3
	C	396	8.1	8.1	99.4
	D	27	.6	.6	99.9
	F	4	.1	.1	100.0
	Total	4885	100.0	100.0	

Student status

		Frequency	Percent	Valid Percent	Cumulative Percent
Valid	No answer	28	.6	.6	.6
	Full-time	4668	95.6	95.6	96.1
	Part-time	189	3.9	3.9	100.0
	Total	4885	100.0	100.0	

Classification

		Frequency	Percent	Valid Percent	Cumulative Percent
Valid	No answer	12	.2	.2	.2
	Freshman or first year	1416	29.0	29.0	29.2
	Sophomore or second year	1147	23.5	23.5	52.7
	Junior	929	19.0	19.0	71.7
	Senior	891	18.2	18.2	90.0
	Grad or professional	450	9.2	9.2	99.2
	Not seeking a degree	15	.3	.3	99.5
	Other	25	.5	.5	100.0
	Total	4885	100.0	100.0	

Location of current residence

		Frequency	Percent	Valid Percent	Cumulative Percent
Valid	No answer	30	.6	.6	.6
	On-campus	3025	61.9	61.9	62.5
	Off-campus	1830	37.5	37.5	100.0
	Total	4885	100.0	100.0	

Housing type

		Frequency	Percent	Valid Percent	Cumulative Percent
Valid	No answer	15	.3	.3	.3
	House or apartment	1945	39.8	39.8	40.1
	Residence hall	2551	52.2	52.2	92.3
	Fraternity or sorority	201	4.1	4.1	96.5
	Other campus housing	99	2.0	2.0	98.5
	Other	74	1.5	1.5	100.0
	Total	4885	100.0	100.0	

Alone

		Frequency	Percent	Valid Percent	Cumulative Percent
Valid	No answer	4148	84.9	84.9	84.9
	Yes	737	15.1	15.1	100.0
	Total	4885	100.0	100.0	

With roomates

		Frequency	Percent	Valid Percent	Cumulative Percent
Valid	No answer	1429	29.3	29.3	29.3
	Yes	3456	70.7	70.7	100.0
	Total	4885	100.0	100.0	

With parents

		Frequency	Percent	Valid Percent	Cumulative Percent
Valid	No answer	4513	92.4	92.4	92.4
	Yes	372	7.6	7.6	100.0
	Total	4885	100.0	100.0	

With spouse

		Frequency	Percent	Valid Percent	Cumulative Percent
Valid	No answer	4569	93.5	93.5	93.5
	Yes	316	6.5	6.5	100.0
	Total	4885	100.0	100.0	

With children

		Frequency	Percent	Valid Percent	Cumulative Percent
Valid	No answer	4664	95.5	95.5	95.5
	Yes	221	4.5	4.5	100.0
	Total	4885	100.0	100.0	

Other

		Frequency	Percent	Valid Percent	Cumulative Percent
Valid	No answer	4763	97.5	97.5	97.5
	Yes	122	2.5	2.5	100.0
	Total	4885	100.0	100.0	

Results from the Indiana College Substance Use Survey 2009

by

Rosemary King, M.P.H.
Mi Kyung Jun, Ph.D.
Carla Janáe Brown, M.S.
Junghun Lee, M.S.

Funded by the Indiana Family and Social Services Administration, Division of Mental Health and Addiction through a contract with the Indiana Collegiate Action Network

Contact:

Indiana Prevention Resource Center
501 North Morton Street Suite 110
Bloomington, IN 47404

<http://www.drugs.indiana.edu>
drugprc@indiana.edu
Toll Free: 1-800-346-3077
Fax: 812-855-4940

